



ELLESSE

ELECTRIC FIRE RANGE

 NU-FLAME

Affordable Quality, Excellence as Standard, Made in the UK

For over 30 years, Nu-Flame has brought together the very best of British Innovation, Design and Engineering to give customers a range of high quality, very efficient, Gas fires with stunningly realistic flames. These qualities are at the core of everything Nu-Flame offers, and we have now turned our expertise and decades of experience to create the new Ellesse range of Electric fires.

Nu-Flame is a family run business, and we have invested heavily in our own state of the art factory in Surrey at a time when much of the industry was outsourcing production overseas.

Controlling our own factory enables us to maintain an ethical working environment, in which our skilled workforce can take pride in the products they create. It also enables us to check our fires at each stage of the production in order to ensure the high quality, reliability and craftsmanship that Nu-Flame is known for.

We choose to design and make all our fires here in the UK, from start to finish, and are proud to have maintained our UK manufacturing base. By choosing a Nu-Flame fire you will be directly supporting us in that decision.

Great design is at the heart of everything we do, and Nu-Flame is one of the longest established independent fire companies still manufacturing exclusively in the UK. Our new Ellesse Electric Fire Range combines the latest technology with the highest manufacturing standards, giving you a fire with a stunningly realistic flame picture that certainly stands out from the crowd.

All Nu-Flame Fires are Eco Design Compliant and are built to ISO9001 Quality Standards.

Are all electric fires made in the UK?

There are many ways that companies can suggest their products are made in the UK, even if they are not. These include describing the company as a British company, prominently using the word British, placing Union Flags on literature, and adopting company names that suggest British manufacture. Nu-Flame is able to categorically state that our products are proudly "Made in the UK."

If buying British matters to you, please insist on the showroom checking the country of manufacture before placing your order.

Contents	Page
Information	3
LS1700 Media Wall	4 - 5
LS1700 Corner Feature	6 - 7
LS1200 Warwick Suite	8 - 9
LS1200 Media Wall	10 - 11
LS1200 Deluxe Trim	12 - 13
LS800 Warwick Suite	14
LS800 Lancaster Suite	15
LS800 Corner Feature	16 - 17
LS800 Hole in the Wall (Frameless)	18
LS800 Deluxe Trim	19
PR800 Balmoral Suite	20
Colourways & Warranty	21
Dimensions	22 - 23
Contact Details	24



The Ellesse Electric Fire Range is available in three Landscape sizes, LS800, LS1200 & LS1700 plus the PR800 Portrait model.

The landscape models have many installation options from hole in the wall, to wall mounted, to feature wall, with the choice of viewing the fire from the front only, or with an additional left or right-handed corner view and even three-sided applications! Whatever your tastes, the Ellesse collection has a model to suit you and your lifestyle!

With features that include App Control, Manual Override, Long Life LEDs, Low Energy Consumption LED Technology, Programmable Thermostat, Fully Variable Mood Lighting and Stunning Hand Painted Logs, to name but a few, let the Nu-Flame Ellesse Electric Fire Range turn your house into a home!

- ◆ **Stunningly Realistic Flame Effect**
- ◆ **Hand Painted, High Quality Ceramic Logs**
- ◆ **Reflective Glass Rear Panel for a deeper looking fuel bed**
- ◆ **High Efficiency LED Lighting**
- ◆ **Colour Control for Flames and Fuel Bed**
- ◆ **Low Running Cost, Flame Effect only setting**
- ◆ **Heat Output – 1.5kW High Setting, 0.75kW Low Setting**
- ◆ **Thermostatic Heat Control**
- ◆ **Bluetooth App Control**
- ◆ **7 Day Programmable Timer**
- ◆ **Eco Design Compliant**

App Control



The Nu-Flame Ellesse Electric Fire Range is operated by an easy to use Bluetooth app on your Apple or Android smartphone/tablet. The app control is simplicity itself! Easy to install and easy to use it gives full control of heating, flame colour options and forward programming, all from the comfort of your armchair. There is also a manual override switch on the fire.

As the app uses Bluetooth your smartphone or tablet will communicate directly with your fire, without there being any need to connect the fire via your Wi-Fi setup.

Features of the Ellesse Electric Fire Range



Smart Fireplace
Bluetooth App



Long Life LEDs



Low Running Cost
'Flame only' Setting



Variable Mood
Lighting



Programmable
Thermostat











LS1200 in Midnight and Ice White
Warwick Suite (floor standing)



LS1200 in Midnight and Ice White
Warwick Suite (wall mounted)









LS1200 Hole in the Wall with Noir Deluxe Trim





LS800 in Grey Pearl and Warm Grey Lancaster Suite (wall mounted only)









LS800 Hole in the Wall
with Piano Black Deluxe Trim



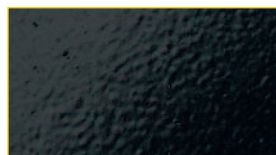
LS800 Hole in the Wall
with Phosphorous Deluxe Trim



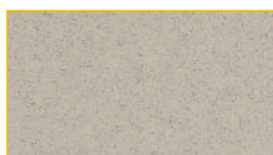
Deluxe Frame Colour Options



Phosphorous



Piano Black



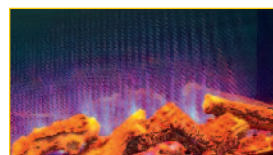
Marfil Stone effect



Noir

Sample Flame colours

The app control allows easy flame and fuel bed colour changes to suit your mood. Just some of the many colours are shown below.



Sample colours of the Warwick and Lancaster Suites



Midnight/Ice White



Light Oak/Soft Cream



Grey Pearl/Warm Grey

Sample colour of the Balmoral Suite



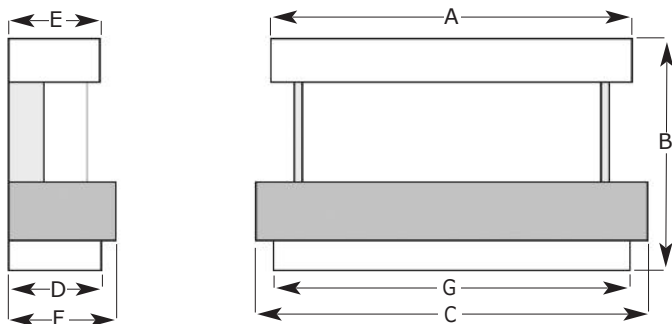
Midnight/Soft Cream

Warranty Nu-Flame fires come with a 1 year warranty as standard. Models from the Ellesse Electric Fire Range purchased via our authorised dealer network can have the warranty extended to 2 years upon registration.* To activate your extended warranty visit www.nu-flame.co.uk/electric-fires-warranty and register your fire within one month of the purchase date.

* Full terms and conditions are available on the above website.

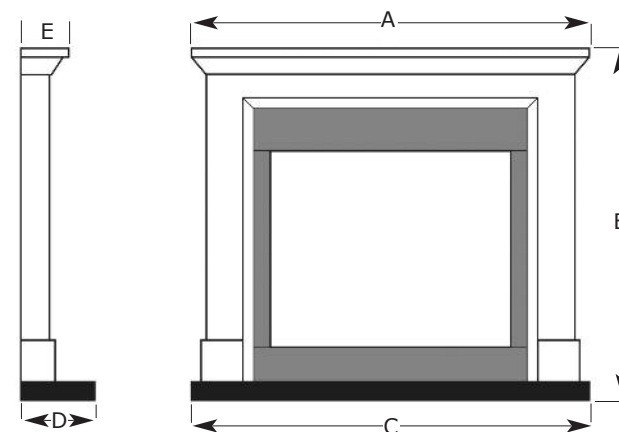
We have made every effort to show the finishes and colours as accurately as possible. Unfortunately, we cannot fully reflect the depth and quality of the finishes in print, nor can we guarantee exact colour matches. Your Nu-Flame stockist can show you swatches of the actual finishes used.

Dimensions and Drawings



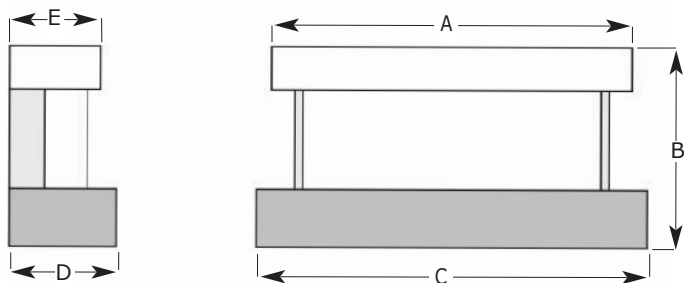
Warwick Suite
floor standing or hang on the wall

Model	A	B	C	D	E	F	G
Warwick LS800	1000	787	1100	320	315	370	980
Warwick LS1200	1500	843	1600	320	315	370	1480



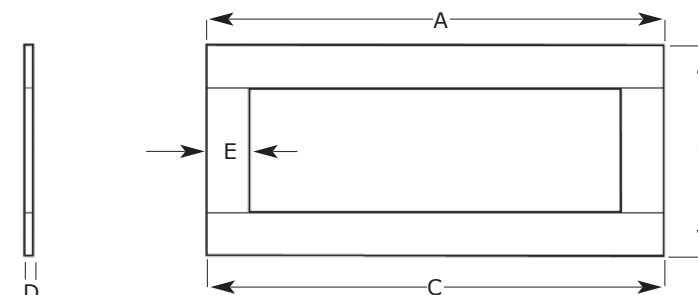
Balmoral Suite
for Ellesse PR800

Model	A	B	C	D	E
Balmoral PR800	1372	1211	1372	254	165



Lancaster Suite
hang on the wall only

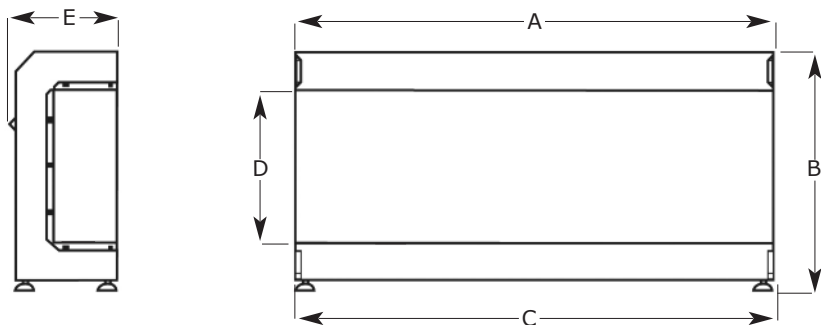
Model	A	B	C	D	E
Lancaster LS800	1000	682	1100	370	315
Lancaster LS1200	1500	738	1600	370	315



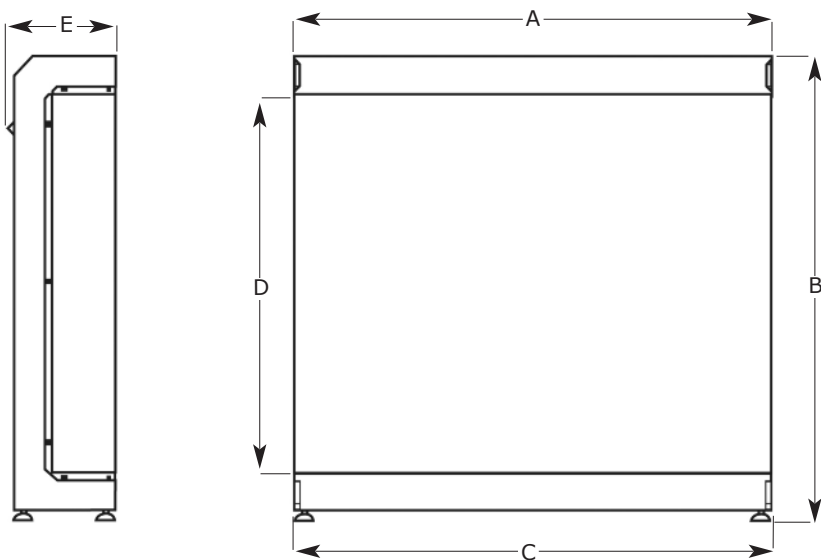
Deluxe Trim
hole in the wall models only

Model	A	B	C	D	E
Deluxe Trim LS800	1060	570	1060	12	120
Deluxe Trim LS1200	1515	630	1515	12	120

Appliance Dimensions



Model	A	B	C	D	E	weight kg
LS800	826	553	826	336	289	41
LS1200	1281	605	1281	394	289	45
LS1700	1705	605	1705	394	289	65



Model	A	B	C	D	E	weight kg
PR800	826	886	826	674	289	52

Please Note: These are simplified drawings for general information only. Refer to installation instructions before undertaking construction work.

ELLESSE

Electric Fire Range



Watch our videos



NU-FLAME

Unit 4 . Kimpton Trade & Business Centre . Minden Rd .
Sutton . Surrey . SM3 9PF

T : 020 8254 6802

F : 020 8641 9992 **E** : sales@nu-flame.co.uk www.nu-flame.co.uk

