

HENLEY[®] STOVES



MAIN BROCHURE 2021

Vol.1



Henley Stoves is one of the fastest growing stove brands in both Ireland and the UK.

At Henley we are committed to providing quality products at affordable prices backed up with a market leading focus on customer service. From factory floor to family home, our customers are our first priority.

We pride ourselves on using new designs, new technology and new environmentally friendly standards to ensure we are a market leader in the provision of the latest quality affordable stoves.

We service a range of customers across Ireland and the UK from our distribution centres in South West Ireland, Dublin and Ely in the UK.

We have a range of products from traditional wood burning stoves to a wide and exclusive range of bioethanol stoves.

Henley has been at the heart of homes across Ireland and the UK since 1989

*** Please note that images of installations within this brochure may not conform to British and Irish building regulations. All images are used for illustration purposes only. Please consult with a qualified professional installer (HETAS registered in the United Kingdom & Republic of Ireland) for expert advice including the requirement for a hearth in your home. Images contained within this brochure are Copyright 2021 of Henley Stoves, All dimensions are correct at time of print, but may be subject to change. Please confirm exact measurements before commencing any installation works.

ECO STOVE COLLECTION

FREESTANDING	Hazelwood	4 - 9
	Hampton	10
	Leaf	12
	Dalewood	14 - 19
	Avon	20
	Burnbright	22
	Cambridge	24
	Lincoln	26
	Elcombe	28
	Carlton	30
	Severn	32 - 37
	Oakwood	38 - 43
	Athens	44 - 47
	Castlecove	48
	Muckross	50

INSERT - CASSETTE |

HENLEY CLASSIC COLLECTION

FREESTANDING	Aran	52
	Sherwood	54 - 57
	Hampshire	58 - 61
	Eden	62
	Cheltenham	64
	Druid	66 - 69
	Apollo	70
	Arklow	72

INSERT - CASSETTE |

EUROPEAN STOVE COLLECTION

FREESTANDING	Barcelona	74
	Elite G1	76
	Elite G3	78

BIO ETHANOL COLLECTION

FREESTANDING	Berlin	80
	Paris	82
	Madrid	84
	Optymyst	86
	Dalewood Bio	88
	Hazelwood Bio	90
	Hazelwood DS Bio	92
	Crete	94
	Hamburg	96
	Oslo	98
WALL MOUNT	Budapest	100
	Milan	102
CEILING MOUNT	Burners	104

WALL MOUNT |

CEILING MOUNT |

INSTALLATION |

ELECTRIC COLLECTION

INSTALLATION	Aurora	106 - 113
--------------	--------	-----------

FIREPLACE ACCESSORIES

Wood Beams & Granite Hearths	112
------------------------------	-----

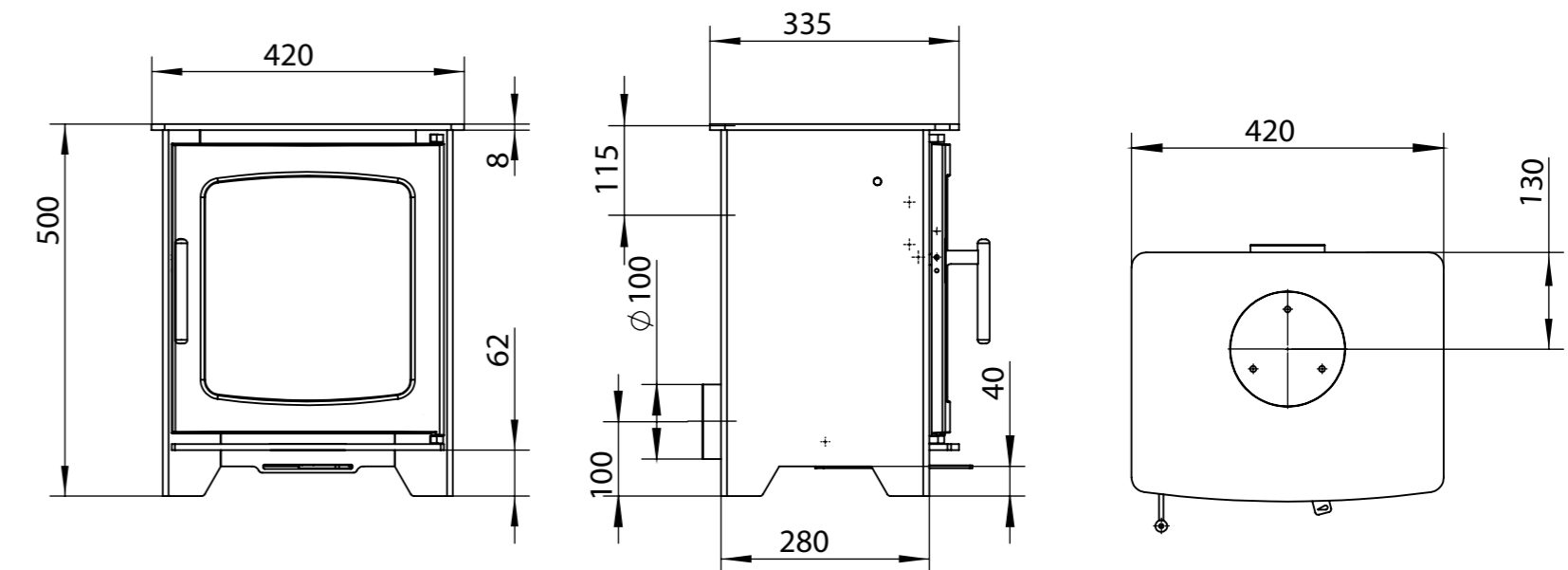


HAZELWOOD COMPACT

Now available as a compact stove, The Hazelwood and Dalewood Compact range still offer great output, efficiency and environmental standards for such a compact size, ensuring the best results for heating your home.



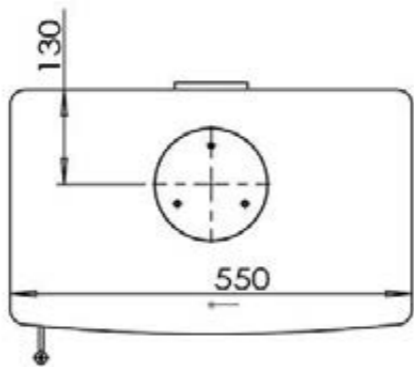
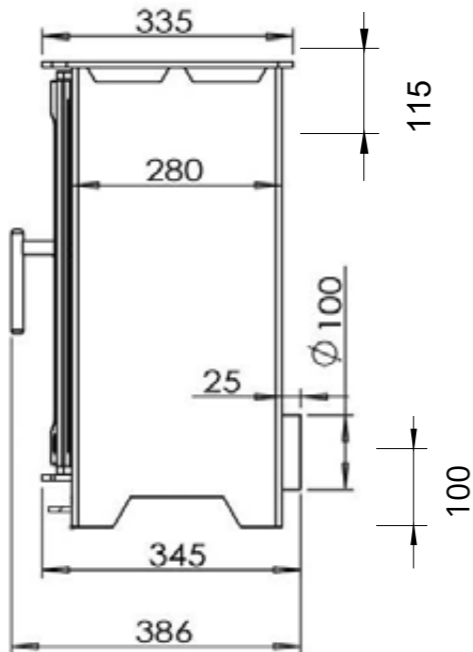
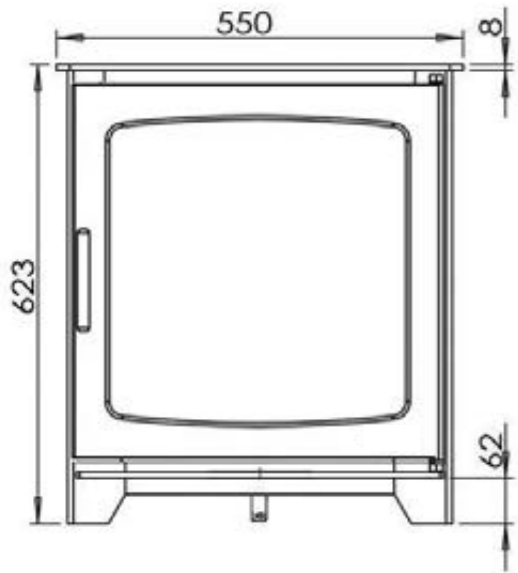
Fuel:	Wood Burning
Heat Output:	4.9 kW
Efficiency:	79.8%
Flue Size:	127mm
Primary Airtake:	✓
Secondary Airtake:	
Advanced Airwash:	
External Air Supply:	✓
2022 Eco Design Ready:	✓
Defra Exempt:	✓
Suitable for 12mm Hearth:	✓



Fuel:	Wood Burning
Heat Output:	4.9 kW
Efficiency:	78.4%
Flue Size:	127mm
Primary Airtake:	✓
Secondary Airtake:	
Advanced Airwash:	
External Air Supply:	✓
2022 Eco Design Ready:	✓
Defra Exempt:	✓
Suitable for 12mm Hearth:	✓

HAZELWOOD LANDSCAPE

The Hazelwood and Dalewood landscape range are one of Henley’s most popular designs. These wood burner stoves meet the highest environmental standards ensuring the best efficiencies and quality heat output.



(Height with Logstore option : 904mm)



ECO READY

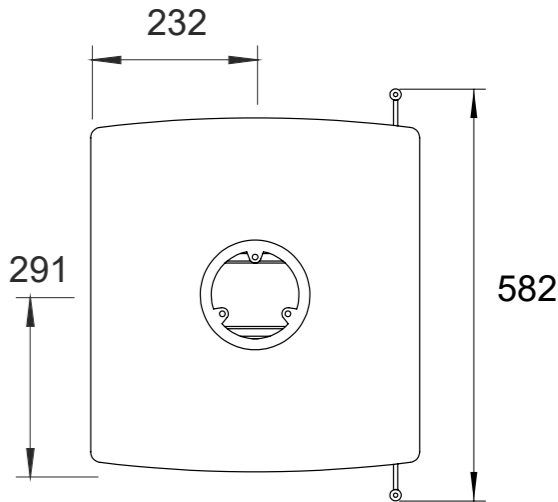
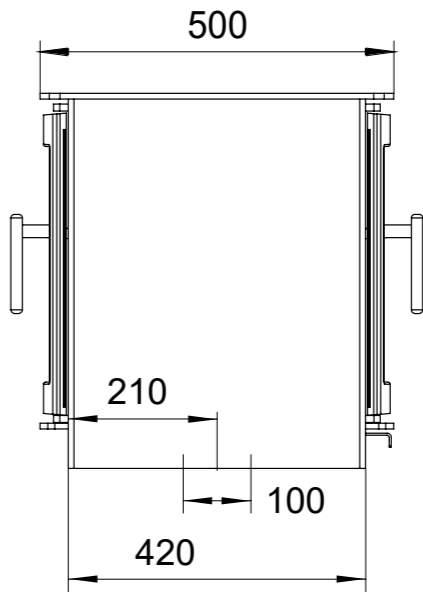
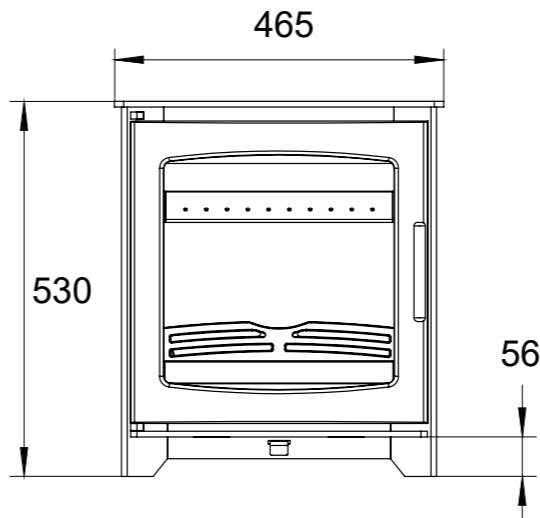


HAZELWOOD DOUBLE SIDE

Henley's newest addition to the Hazelwood/Dalewood lineup is now available. A larger double side woodburner design makes this the perfect centrepiece to your home.



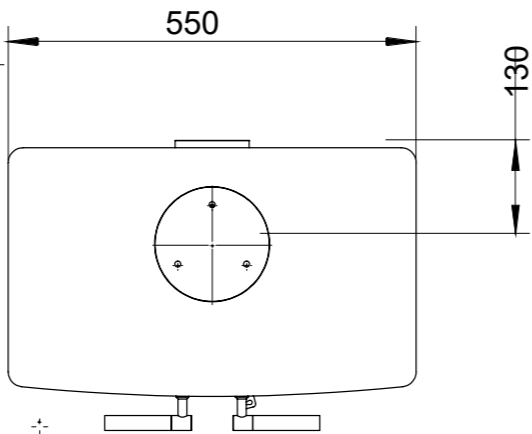
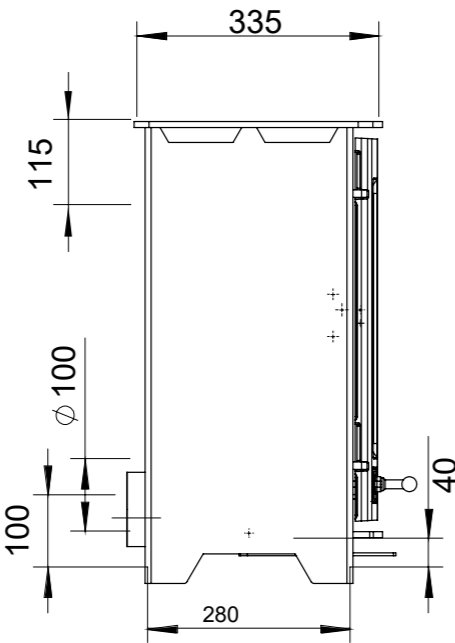
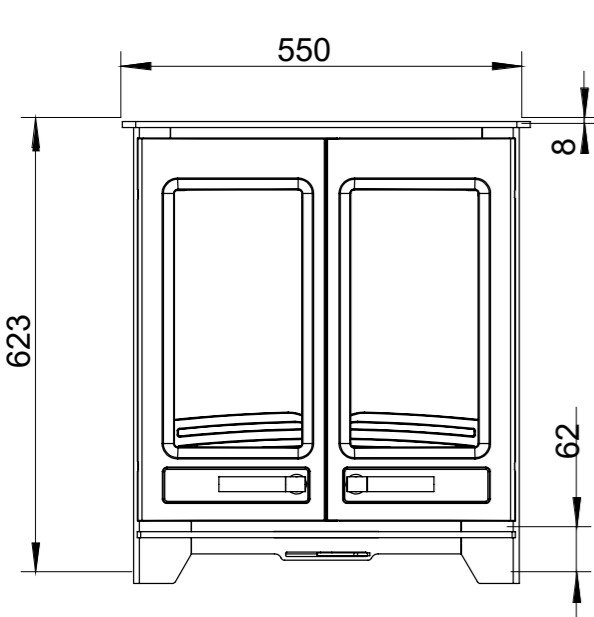
Fuel:	Wood Burning
Heat Output:	6.5 kW
Efficiency:	75.7%
Flue Size:	127mm
Primary Airtake:	✓
Secondary Airtake:	
Advanced Airwash:	
External Air Supply:	✓
2022 Eco Design Ready:	✓
Defra Exempt:	✓
Suitable for 12mm Hearth:	✓



Fuel:	Wood Burning
Heat Output:	4.9 kW
Efficiency:	78.4%
Flue Size:	127mm
Primary Airtake:	✓
Secondary Airtake:	
Advanced Airwash:	
External Air Supply:	✓
2022 Eco Design Ready:	✓
Defra Exempt:	✓
Suitable for 12mm Hearth:	✓

HAMPTON 5

One of Henley’s most classic double door designs, The new Hampton 5 is a steel body stove with classic cast iron doors boasts great efficiency and environmental performance while giving a sense of style and tradition to your fireplace.



ECO READY

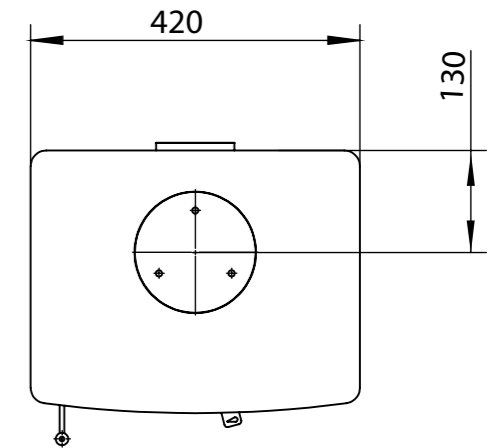
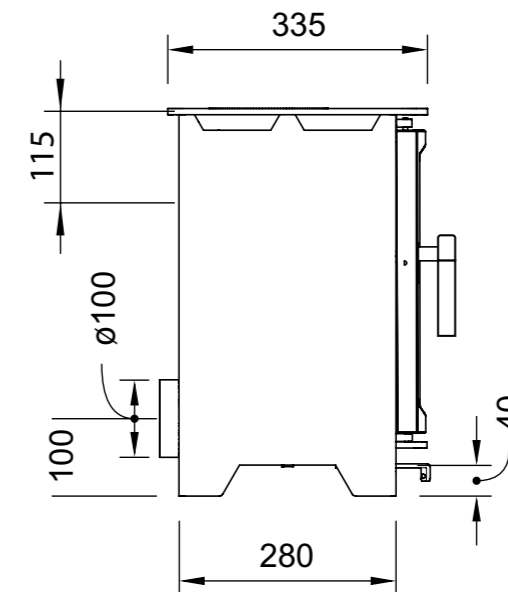
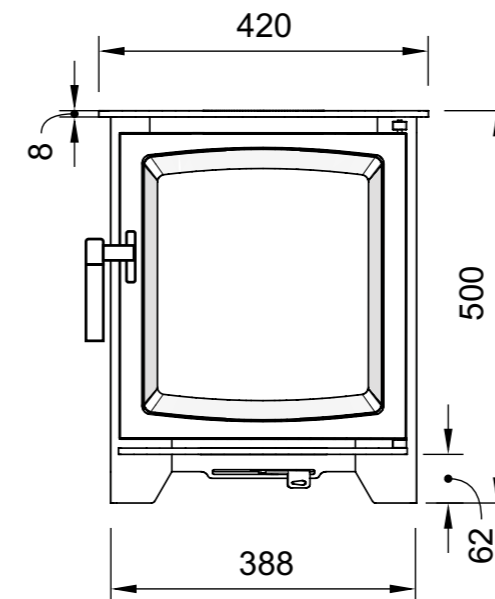


LEAF

Introducing the latest addition to Henley's compact line. The Leaf is a steel body stove with cast iron door boasting great efficiency and environmental performance. The Leaf has a heat output of 5kW with efficiencies reaching up to 80%.



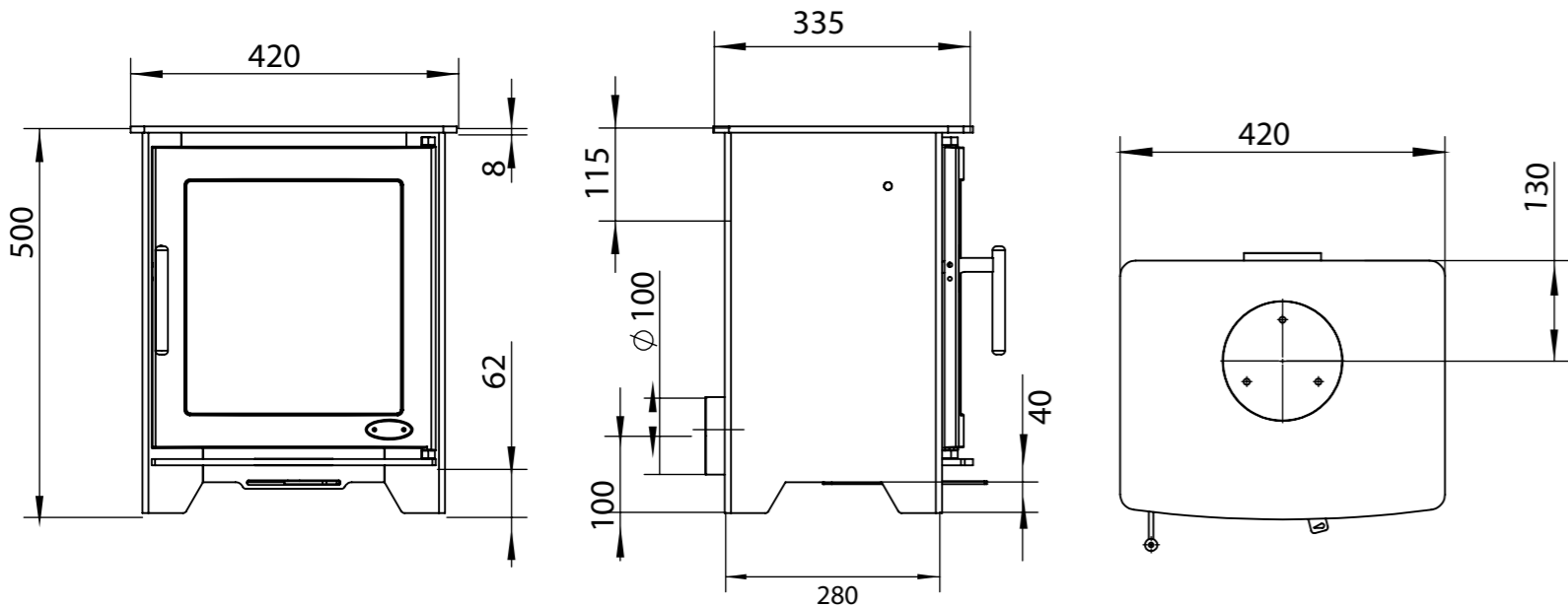
Fuel:	Wood Burning
Heat Output:	4.9 kW
Efficiency:	79.8%
Flue Size:	127mm
Primary Airtake:	✓
Secondary Airtake:	
Advanced Airwash:	
External Air Supply:	✓
2022 Eco Design Ready:	✓
Defra Exempt:	✓
Suitable for 12mm Hearth:	✓



Fuel:	Wood Burning
Heat Output:	4.9 kW
Efficiency:	79.8%
Flue Size:	127mm
Primary Airtake:	✓
Secondary Airtake:	
Advanced Airwash:	
External Air Supply:	✓
2022 Eco Design Ready:	✓
Defra Exempt:	✓
Suitable for 12mm Hearth:	✓

DALEWOOD COMPACT

Now available as a compact stove, The Hazelwood and Dalewood Compact range still offer great output, efficiency and environmental standards for such a compact size, ensuring the best results for heating your home.



ECO READY

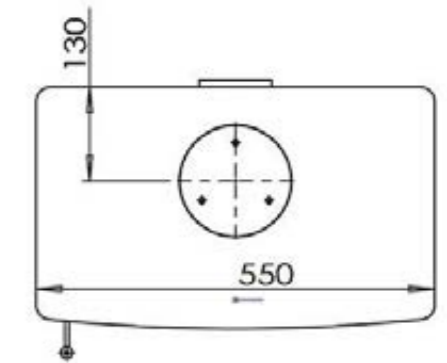
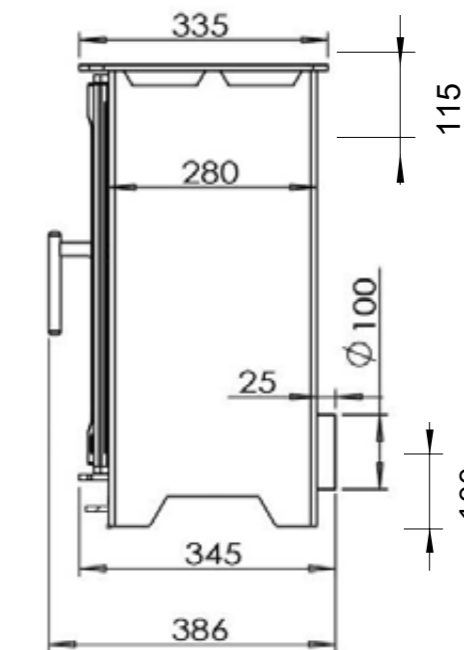
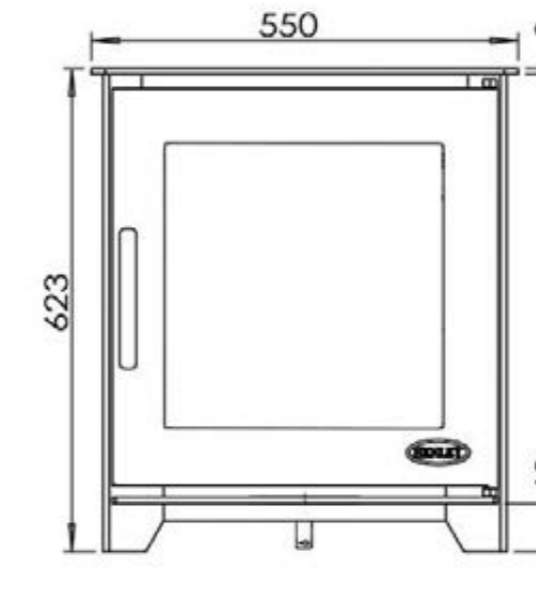


DALEWOOD LANDSCAPE

The Hazelwood and Dalewood landscape range are one of Henley's most popular designs. These wood burner stoves meet the highest environmental standards ensuring the best efficiencies and quality heat output.



Fuel:	Wood Burning
Heat Output:	4.9 kW
Efficiency:	78.4%
Flue Size:	127mm
Primary Airtake:	✓
Secondary Airtake:	
Advanced Airwash:	
External Air Supply:	✓
2022 Eco Design Ready:	✓
Defra Exempt:	✓
Suitable for 12mm Hearth:	✓



(Height with Logstore option : 904mm)

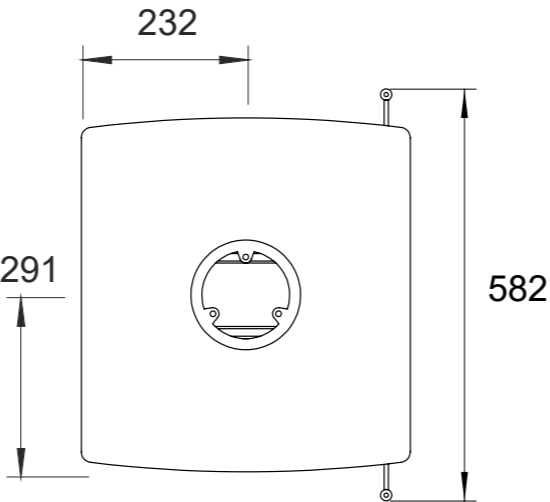
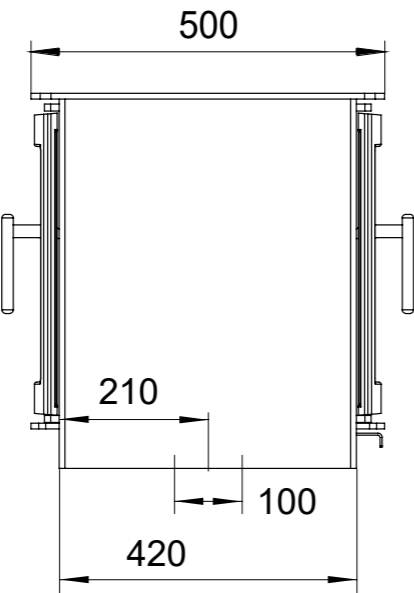
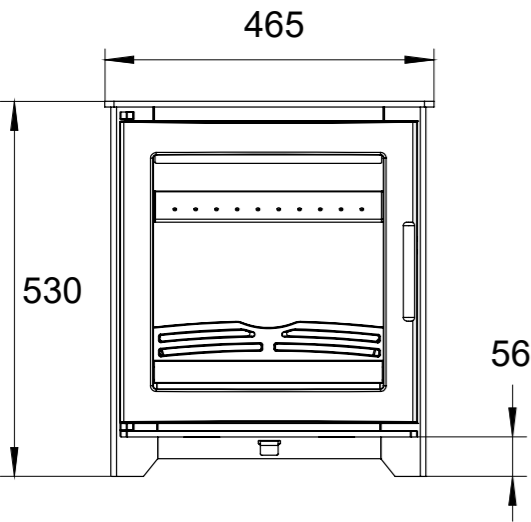
Fuel:	Wood Burning
Heat Output:	6.5 kW
Efficiency:	75.7%
Flue Size:	127mm
Primary Airtake:	✓
Secondary Airtake:	
Advanced Airwash:	
External Air Supply:	✓
2022 Eco Design Ready:	✓
Defra Exempt:	✓
Suitable for 12mm Hearth:	✓

DALELWOOD DOUBLE SIDE

Henley’s newest addition to the Hazelwood/Dalewood lineup is now available. A larger double side woodburner design makes this the perfect centrepiece to your home.



ECO READY



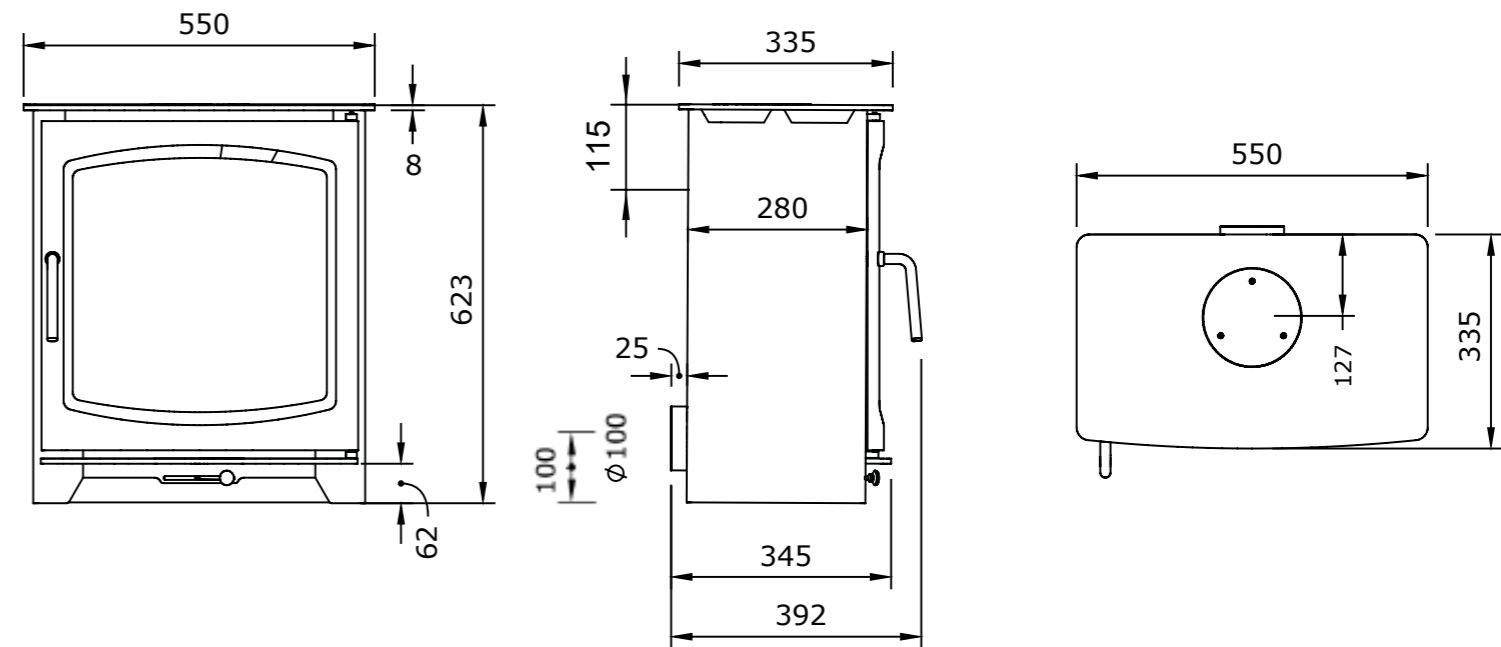


AVON

The Avon has a rated output of 4.9kW. Operated by one single air control, the combustion system drastically reduces emissions and gives a superior flame pattern. The paired-down simplicity makes for a thoroughly stylish option for modern urban settings as well as traditional homes.



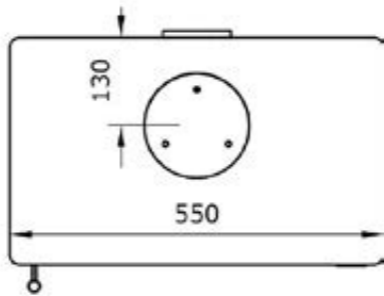
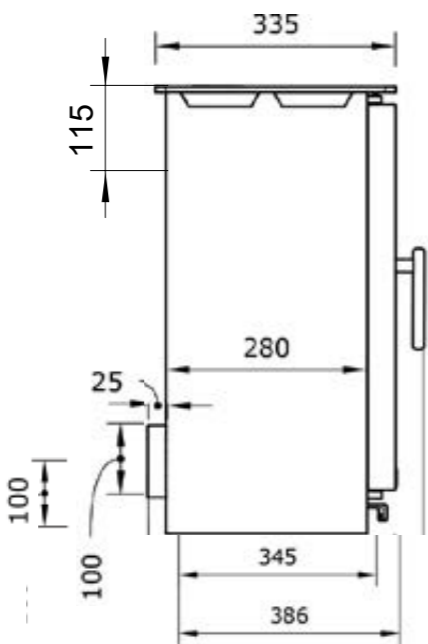
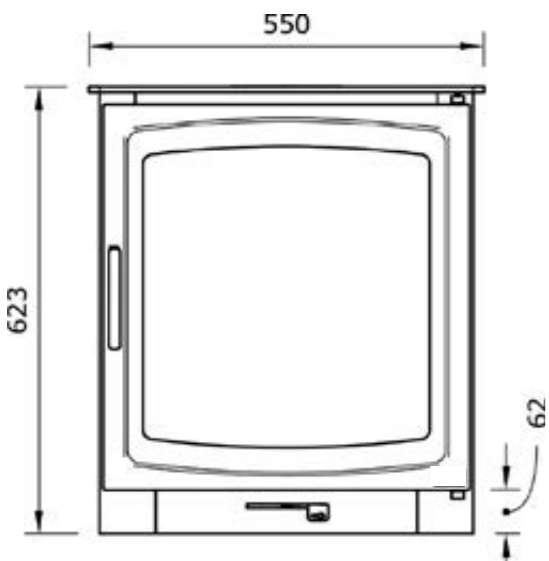
Fuel:	Wood Burning
Heat Output:	4.9kW
Efficiency:	78.4%
Flue Size:	127mm
Primary Airtake:	✓
Secondary Airtake:	
Advanced Airwash:	
External Air Supply:	✓
2022 Eco Design Ready:	✓
Defra Exempt:	✓
Suitable for 12mm Hearth:	✓



Fuel:	Wood Burning
Heat Output:	4.9kW
Efficiency:	78.4%
Flue Size:	127mm
Primary Airtake:	✓
Secondary Airtake:	
Advanced Airwash:	
External Air Supply:	✓
2022 Eco Design Ready:	✓
Defra Exempt:	✓
Suitable for 12mm Hearth:	✓

BURNBRIGHT

The Burnbright delivers 4.9kW of heat to the room with crystal clear burn and remarkable control. Purposely designed to maximize the view of the fire, the minimal styling of the Burnbright fits comfortably into any fireside situation.



ECO READY

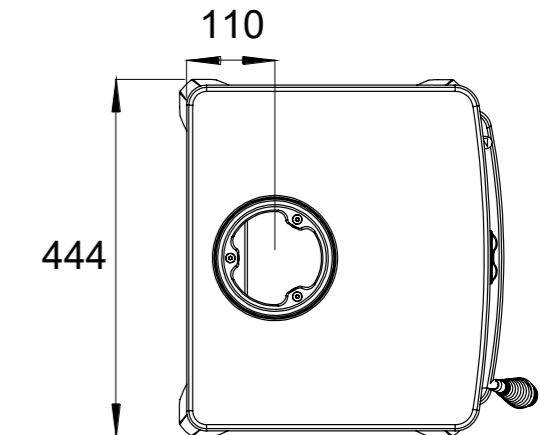
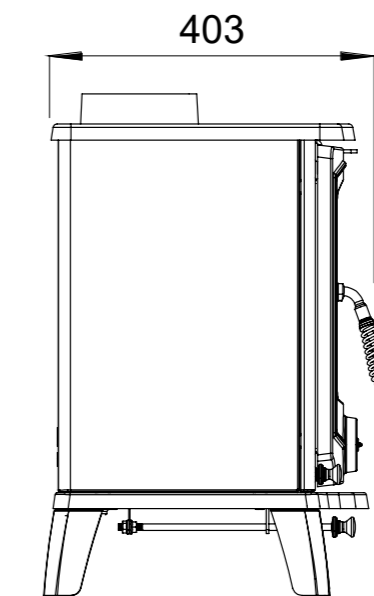
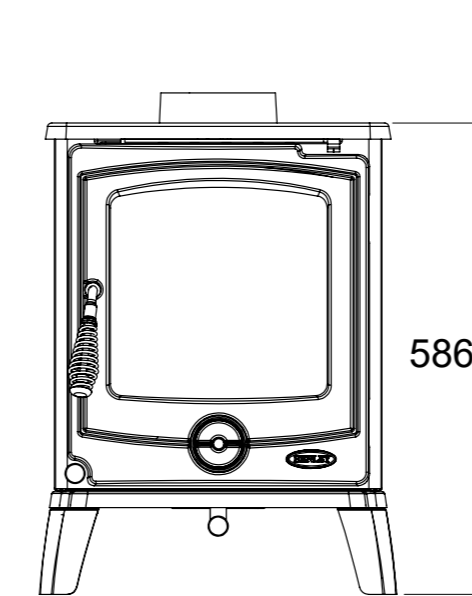


CAMBRIDGE ECO 5

The Cambridge 5kW stove is a blend of traditional values with a modern twist. Adapted for the eco line, its popular look and excellent build quality make this stove an excellent choice for any customer. Boasting primary, secondary and tertiary air for excellent air control and an efficiency level of over 80%.



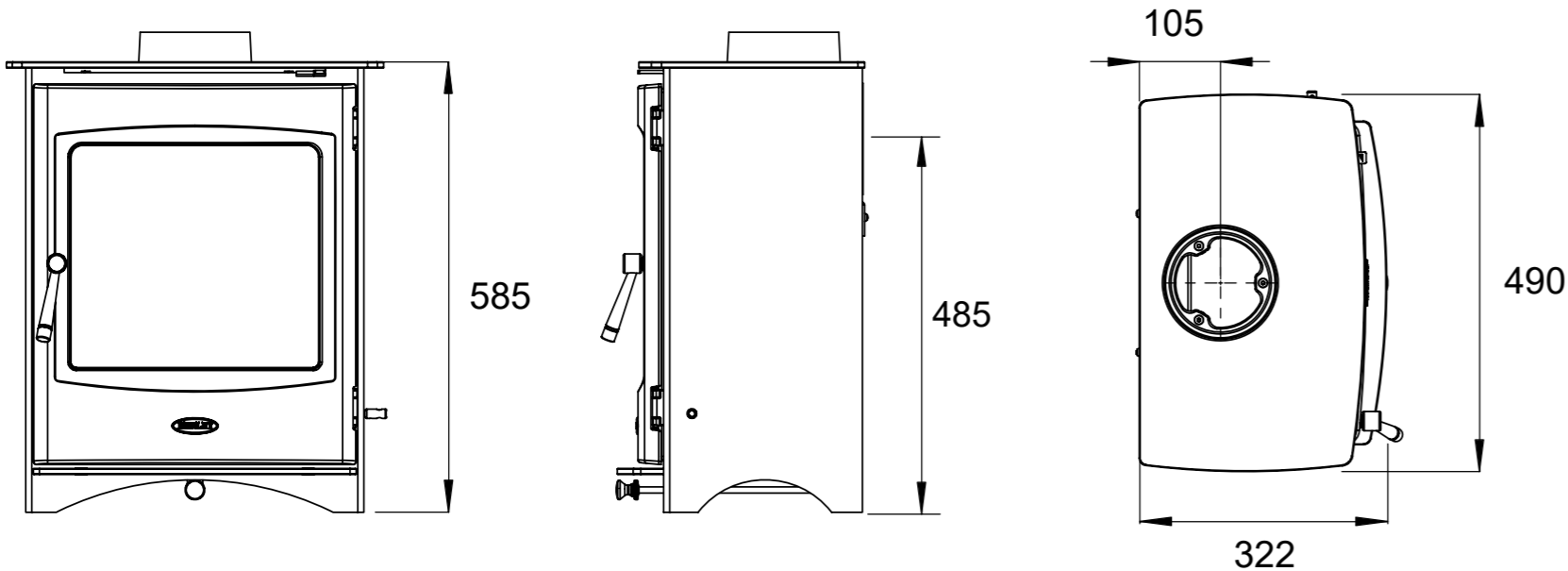
Fuel:	Wood Burning
Heat Output:	4.9 kW
Efficiency:	80.9%
Flue Size:	127mm
Primary Airtake:	✓
Secondary Airtake:	✓
Advanced Airwash:	✓
External Air Supply:	
2022 Eco Design Ready:	✓
Defra Exempt:	✓
Suitable for 12mm Hearth:	✓



Fuel:	Wood Burning
Heat Output:	5.0 kW
Efficiency:	78.1%
Flue Size:	127mm
Primary Airtake:	✓
Secondary Airtake:	✓
Advanced Airwash:	✓
External Air Supply:	
2022 Eco Design Ready:	✓
Defra Exempt:	✓
Suitable for 12mm Hearth:	✓

LINCOLN 5

The Lincoln 5kW room heater stove combines contemporary stove design with a blend of traditional values. Now adapted for the eco line, it's attractive look and excellent cast iron build quality makes this stove an excellent choice for any customer, available with or without a log-store.



(Height with Logstore option : 815mm)



ECO READY

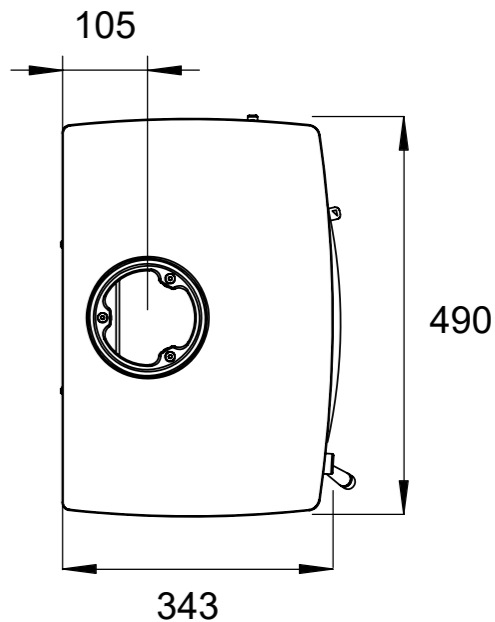
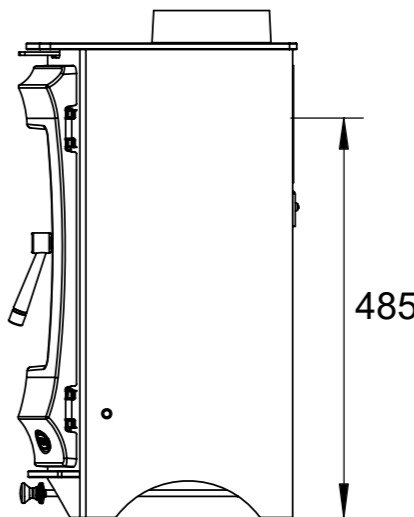
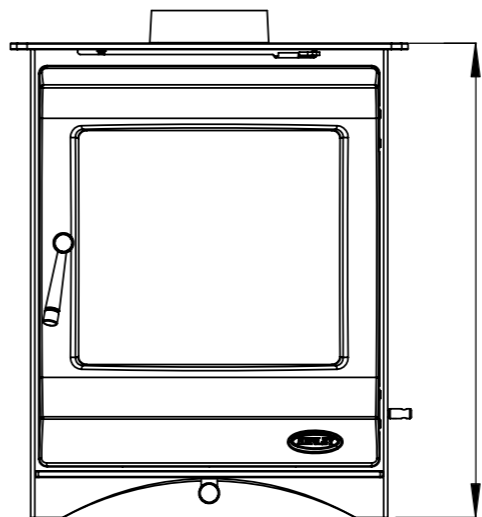


ELCOMBE 5

Now adapted for the eco line, the Elcombe 5kW room heater’s output is remarkable for its modest size. Combining a sleek body with solid features, the Elcombe will compliment any modern or traditional interior. The Elcombe is also available with log-store option.



Fuel:	Wood Burning
Heat Output:	5.0 kW
Efficiency:	78.1%
Flue Size:	127mm
Primary Airtake:	✓
Secondary Airtake:	✓
Advanced Airwash:	✓
External Air Supply:	
2022 Eco Design Ready:	✓
Defra Exempt:	✓
Suitable for 12mm Hearth:	✓

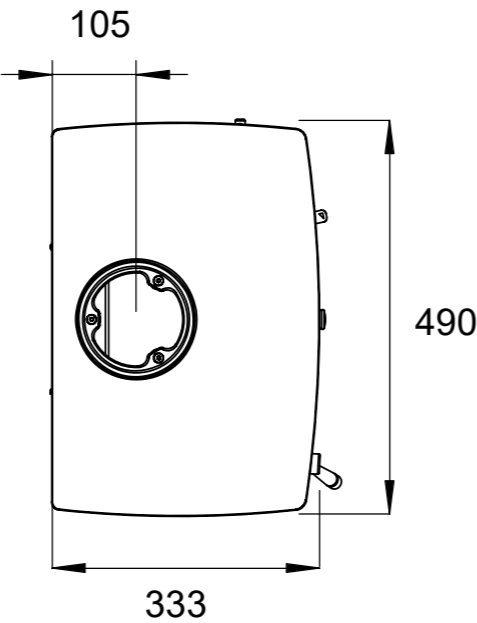
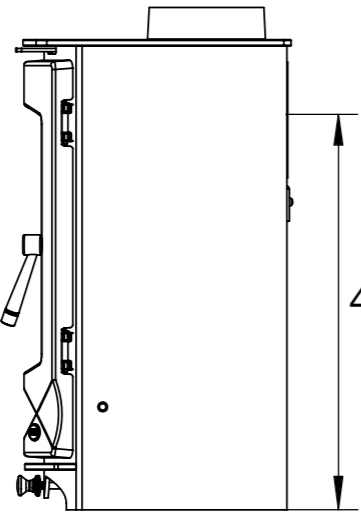
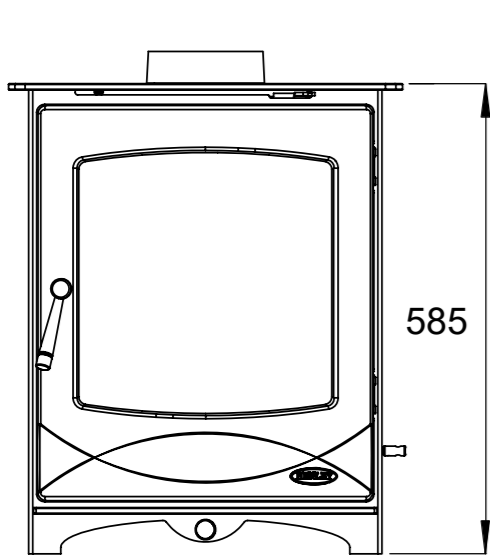


(Height with Logstore option : 815mm)

Fuel:	Wood Burning
Heat Output:	5.0 kW
Efficiency:	78.1%
Flue Size:	127mm
Primary Airtake:	✓
Secondary Airtake:	✓
Advanced Airwash:	✓
External Air Supply:	
2022 Eco Design Ready:	✓
Defra Exempt:	✓
Suitable for 12mm Hearth:	✓

CARLTON 5

The elegant wood burning Carlton adds a sense of timeless style to any modern or period room. Adapted for the eco line, this stove is as efficient as it is stylish, providing up to 5kW of heat and a welcoming glow that only real flame can provide.



ECO READY

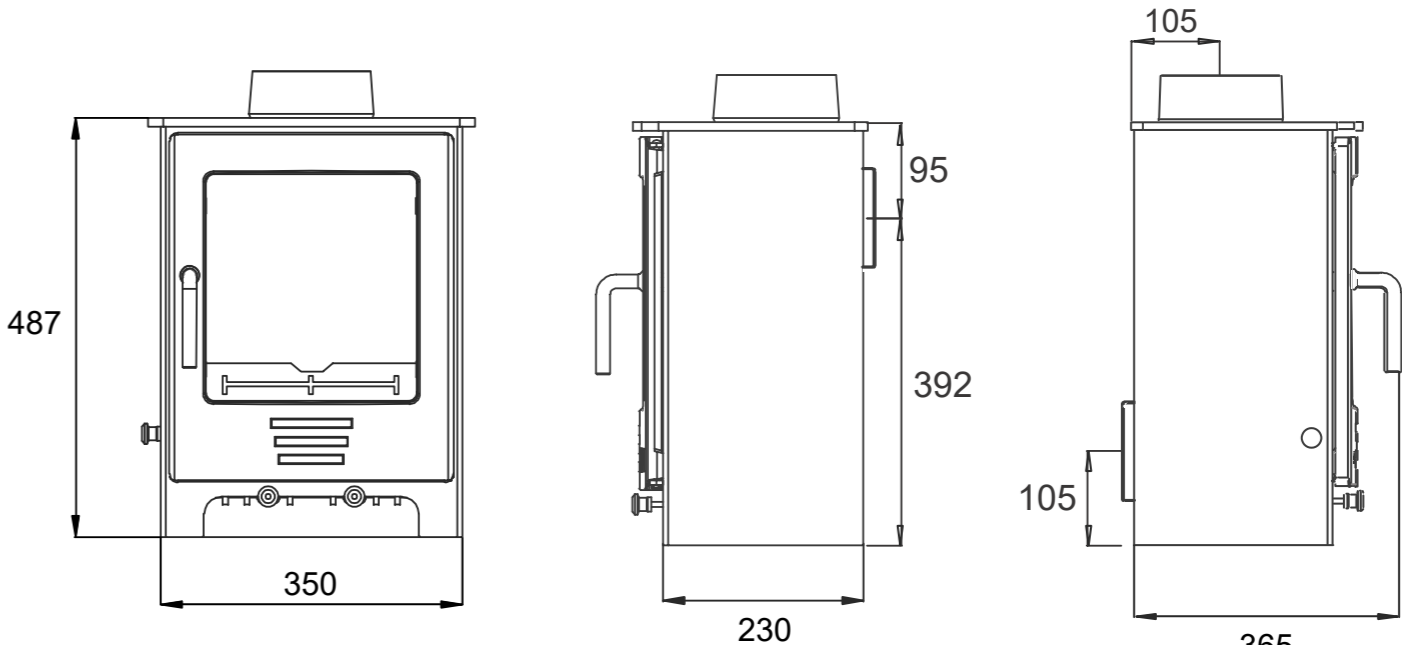


SEVERN 4

The Severn 4 is a wood burning only stove which is modern in style and manufactured with high grade steel and cast-iron door. A heat output of 4.1kW the Severn 4 also has the ability to add a log-store feature which caters for both convenience and practicality.



Fuel:	Wood Burning
Heat Output:	4.1 kW
Efficiency:	75.4%
Flue Size:	127mm
Primary Airtake:	✓
Secondary Airtake:	✓
Advanced Airwash:	✓
External Air Supply:	✓
2022 Eco Design Ready:	✓
Defra Exempt:	✓
Suitable for 12mm Hearth:	✓

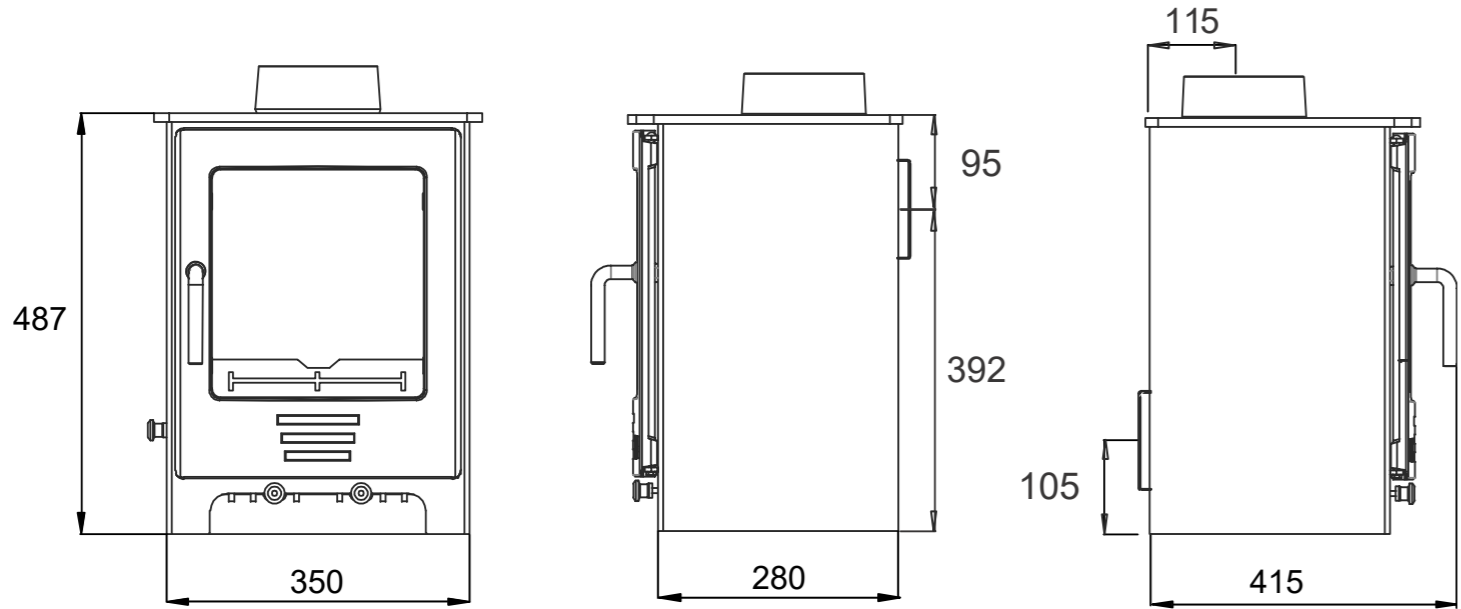


(Height with Logstore option : 637mm)

SEVERN 5

Fuel:	Wood Burning
Heat Output:	5.0 kW
Efficiency:	75.6%
Flue Size:	127mm
Primary Airtake:	✓
Secondary Airtake:	✓
Advanced Airwash:	✓
External Air Supply:	✓
2022 Eco Design Ready:	✓
Defra Exempt:	✓
Suitable for 12mm Hearth:	✓

The Severn 5 is part of the new Henley Stove additions boasting both a contemporary design coupled with classic features making it a perfect choice for all tastes. With a 5kW heat output and an efficiency rating of 75.6%, the Severn 5 also includes the option to add a convenient log-store feature.



(Height with Logstore option : 637mm)



ECO READY

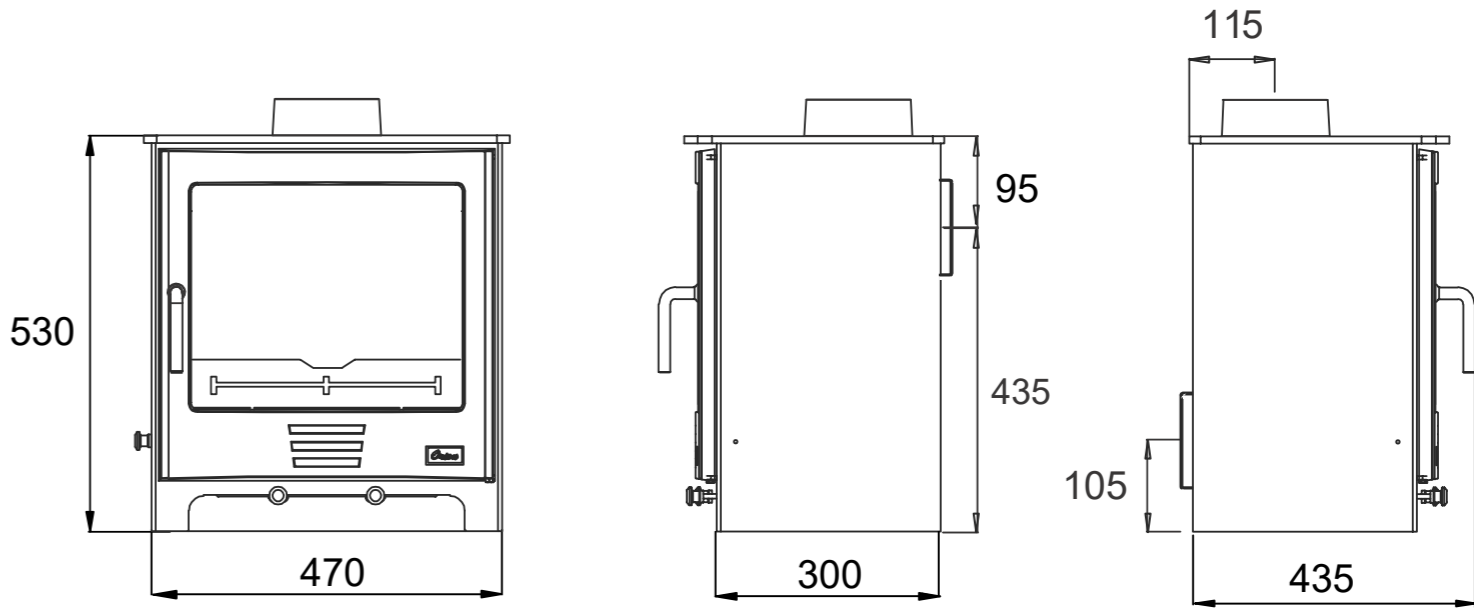


SEVERN 8

The Severn 8 is the largest capacity stove in the Severn family with a heat output of 8kW and of 79%. Offering superior heating the Severn 8 is Eco design ready and available with a convenient log-store feature.



Fuel:	Wood Burning
Heat Output:	8.4kW
Efficiency:	79.0%
Flue Size:	127mm
Primary Airtake:	✓
Secondary Airtake:	✓
Advanced Airwash:	✓
External Air Supply:	✓
2022 Eco Design Ready:	✓
Defra Exempt:	
Suitable for 12mm Hearth:	✓

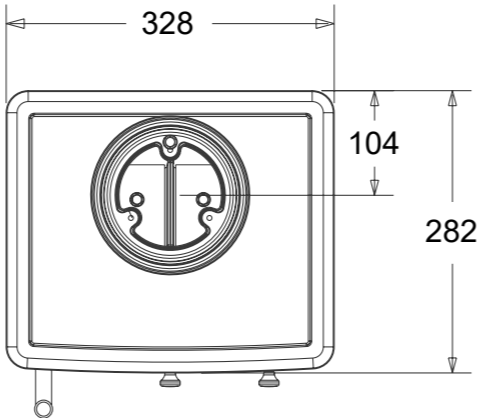
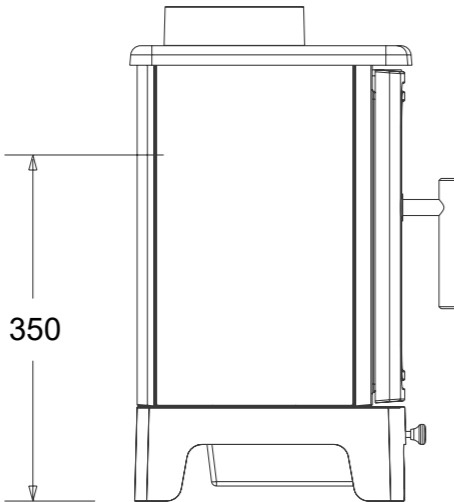
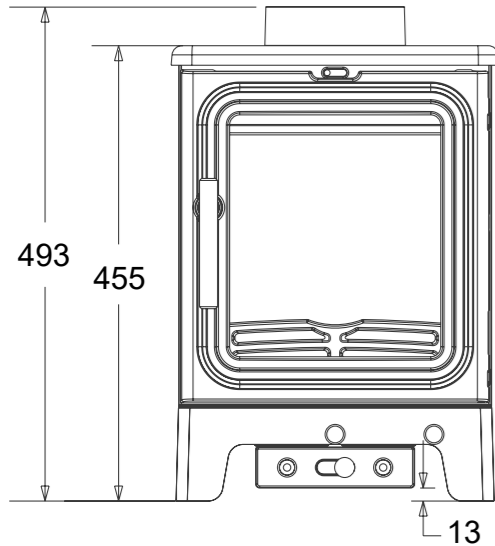


(Height with Logstore option : 730mm)

Fuel:	Wood Burning
Heat Output:	3.9 kW
Efficiency:	77.1%
Flue Size:	127mm
Primary Airtake:	✓
Secondary Airtake:	✓
Advanced Airwash:	✓
External Air Supply:	
2022 Eco Design Ready:	✓
Defra Exempt:	
Suitable for 12mm Hearth:	✓

OAKWOOD MINI

The Oakwood Mini 3.9kW is the perfect stove for any home setting, with a compact size and high efficiency of 77.1%. The Oakwood stove also comes with a convenient log-store option to store fuel which makes it a favourable feature.



(Height with Logstore option : 696mm)



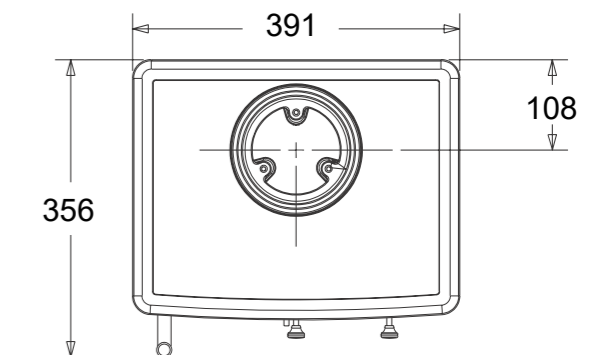
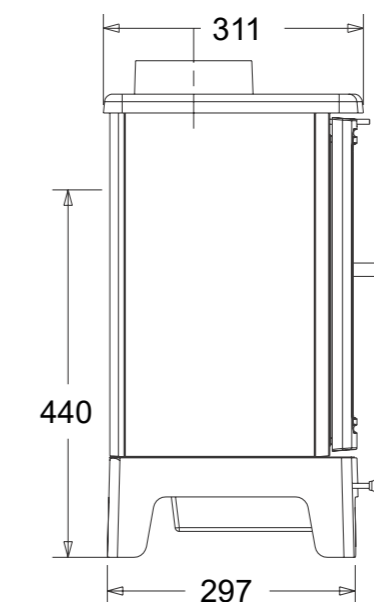
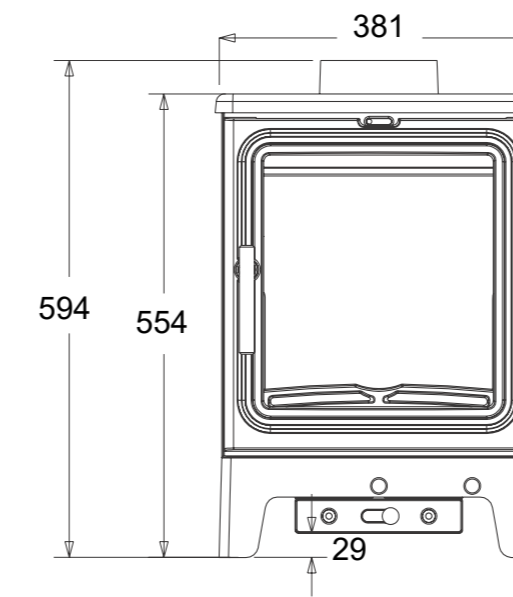


OAKWOOD MID

The Oakwood 5kW is a Wood burning stove. The classic but sophisticated aesthetic are designed to grace both period and modern features alike. With an A energy rating and a high efficiency level of 76.4%. Also available with a convenient log-store.



Fuel:	Wood Burning
Heat Output:	5.0 kW
Efficiency:	76.4%
Flue Size:	127mm
Primary Airtake:	✓
Secondary Airtake:	✓
Advanced Airwash:	✓
External Air Supply:	
2022 Eco Design Ready:	✓
Defra Exempt:	✓
Suitable for 12mm Hearth:	✓

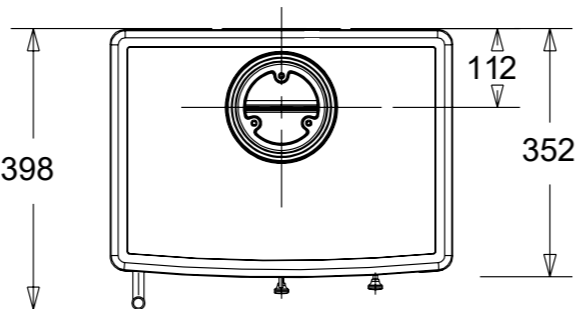
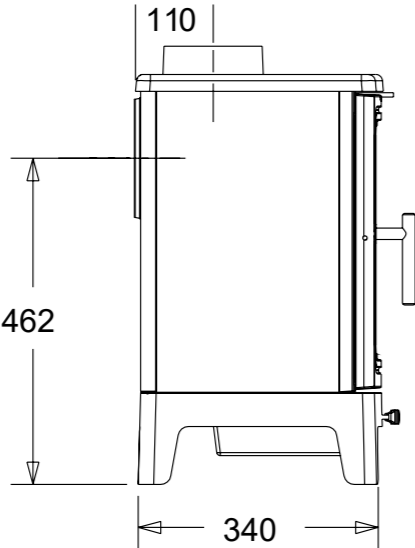
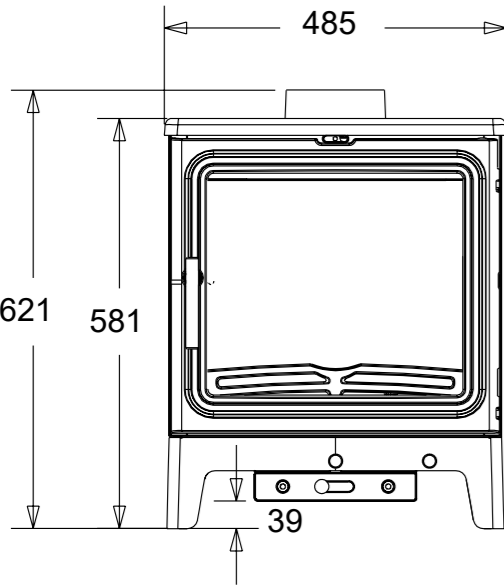


(Height with Logstore option : 815mm)

Fuel:	Wood Burning
Heat Output:	6.9 kW
Efficiency:	80.5%
Flue Size:	127mm
Primary Airtake:	✓
Secondary Airtake:	✓
Advanced Airwash:	✓
External Air Supply:	
2022 Eco Design Ready:	✓
Defra Exempt:	
Suitable for 12mm Hearth:	✓

OAKWOOD BIG

The Oakwood 6.9kW is the largest capacity model of the range Oakwood range. With a high efficiency of over 80% and low emission systems make this the perfect stove for town or country living. Also available with a convenient log-store.



(Height with Logstore option : 833mm)



ECO READY

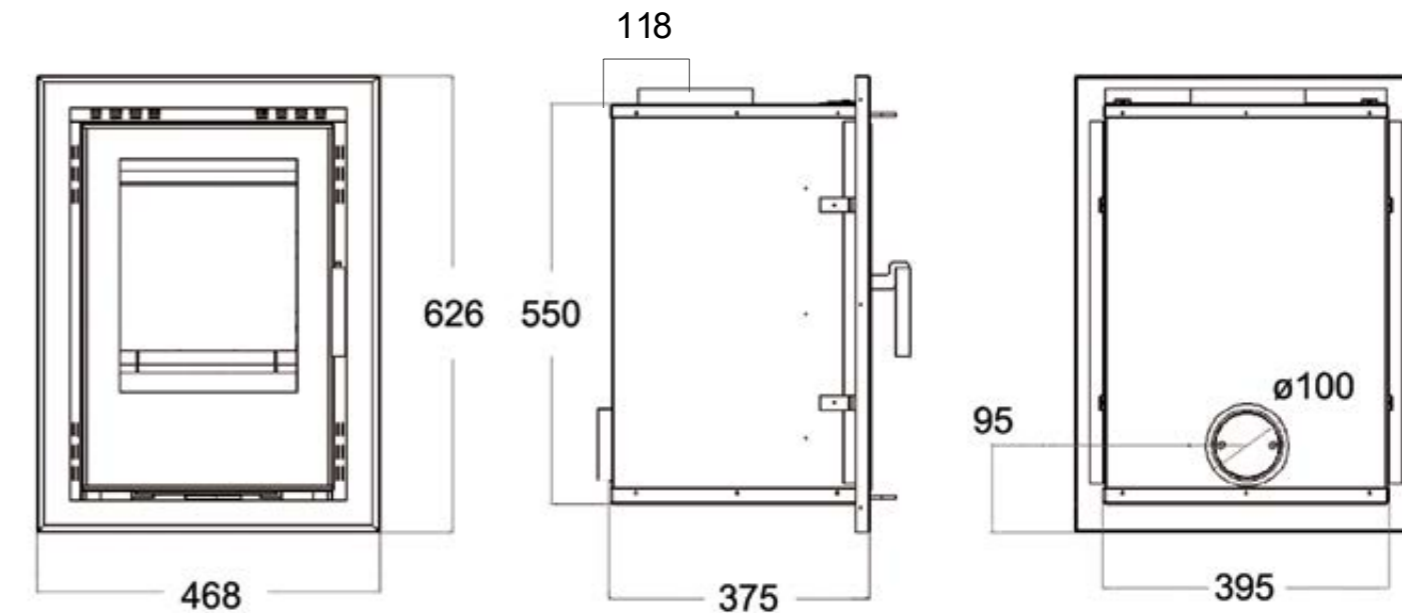


ATHENS 400

The Athens 400 & 500 Wood Burning Cassette Stoves are manufactured with a beautiful steel construction & boast excellent burn control along with up to 81% efficiencies. Sleek modern design and large viewing glass look stunning in any home.



Fuel:	Wood Burning
Heat Output:	4.8 kW
Efficiency:	80.8%
Flue Size:	153mm
Primary Airtake:	✓
Secondary Airtake:	✓
Advanced Airwash:	
External Air Supply:	✓
2022 Eco Design Ready:	✓
Defra Exempt:	
Suitable for 12mm Hearth:	✓



(This stove needs to be connected to an external air source)

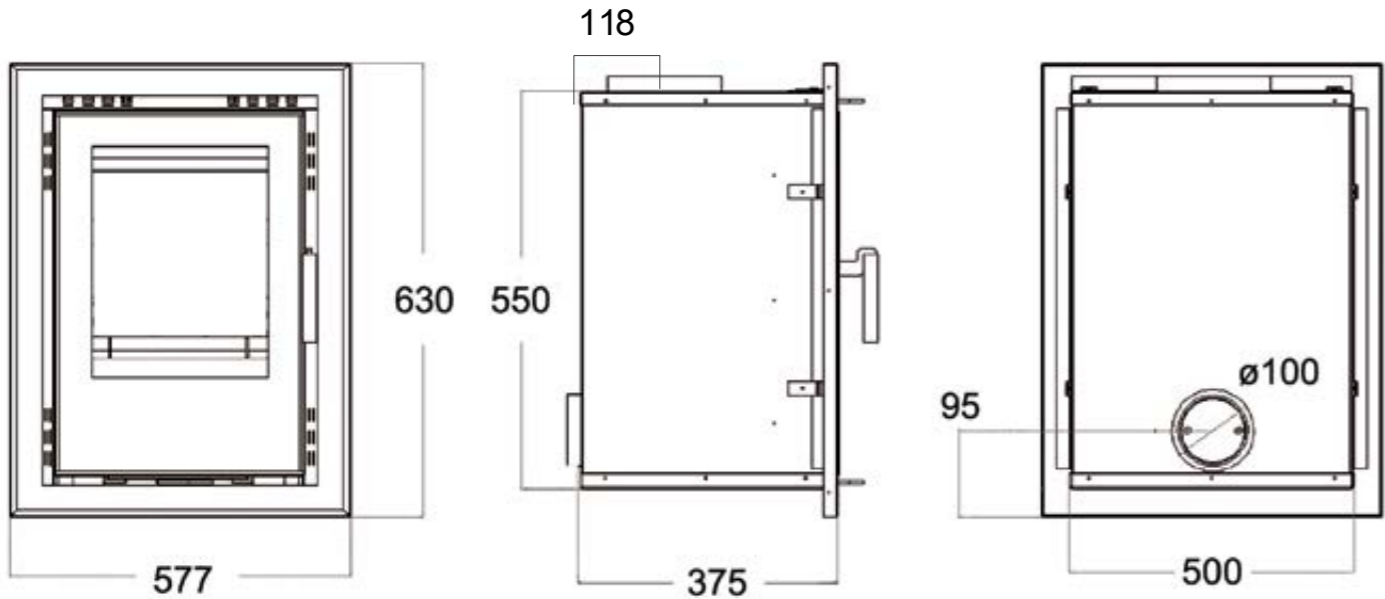
Fuel:	Wood Burning
Heat Output:	6.2 kW
Efficiency:	75.0%
Flue Size:	153mm
Primary Airtake:	✓
Secondary Airtake:	✓
Advanced Airwash:	
External Air Supply:	✓
2022 Eco Design Ready:	✓
Defra Exempt:	
Suitable for 12mm Hearth:	✓

ATHENS 500

The Athens 400 & 500 Wood Burning Casette Stoves are manufactured with a beautiful steel construction & boast excellent burn control along with up to 81% efficiencies. Sleek modern design and large viewing glass look stunning in any home.



ECO READY



(This stove needs to be connected to an external air source)



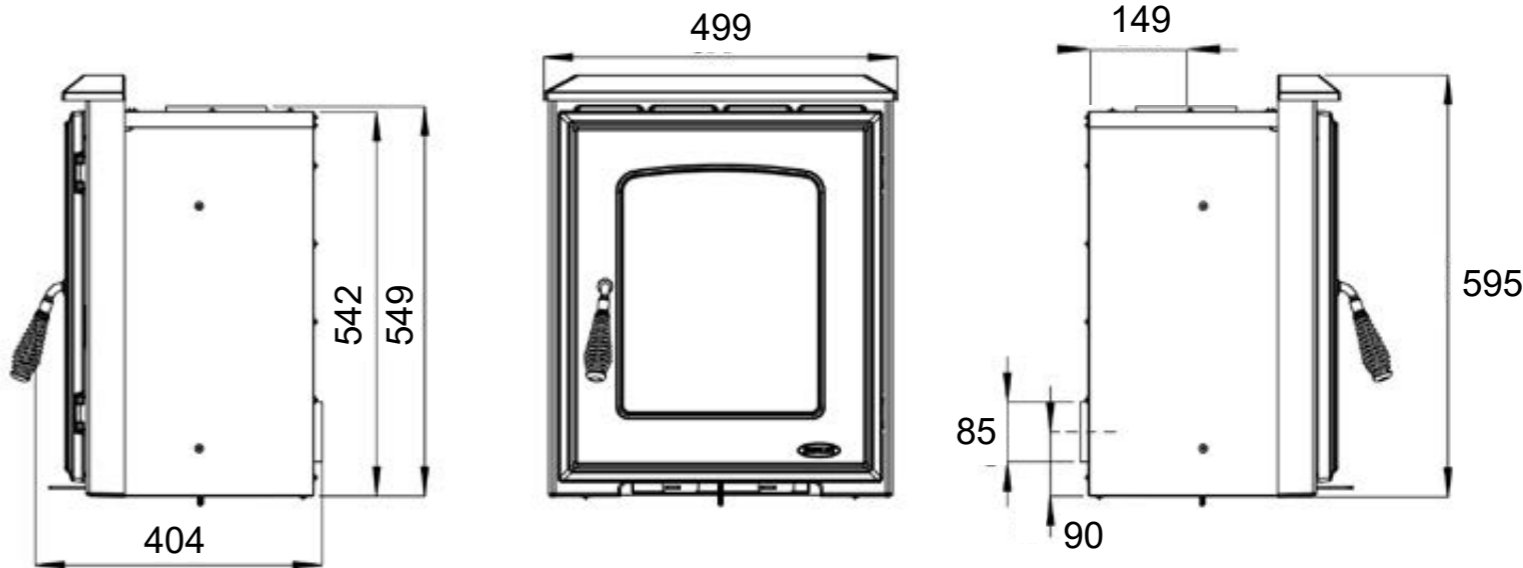


CASTLECOVE

The Castlecove is a fully cast-iron stove with over 83% efficiency. Its convection-based technology creates unrivalled constant warmth in your room and will fit most standard 16/18" fireplace openings.



Fuel:	Wood Burning
Heat Output:	4.6 kW
Efficiency:	83.3%
Flue Size:	127mm
Primary Airtake:	✓
Secondary Airtake:	✓
Advanced Airwash:	
External Air Supply:	✓
2022 Eco Design Ready:	✓
Defra Exempt:	✓
Suitable for 12mm Hearth:	✓

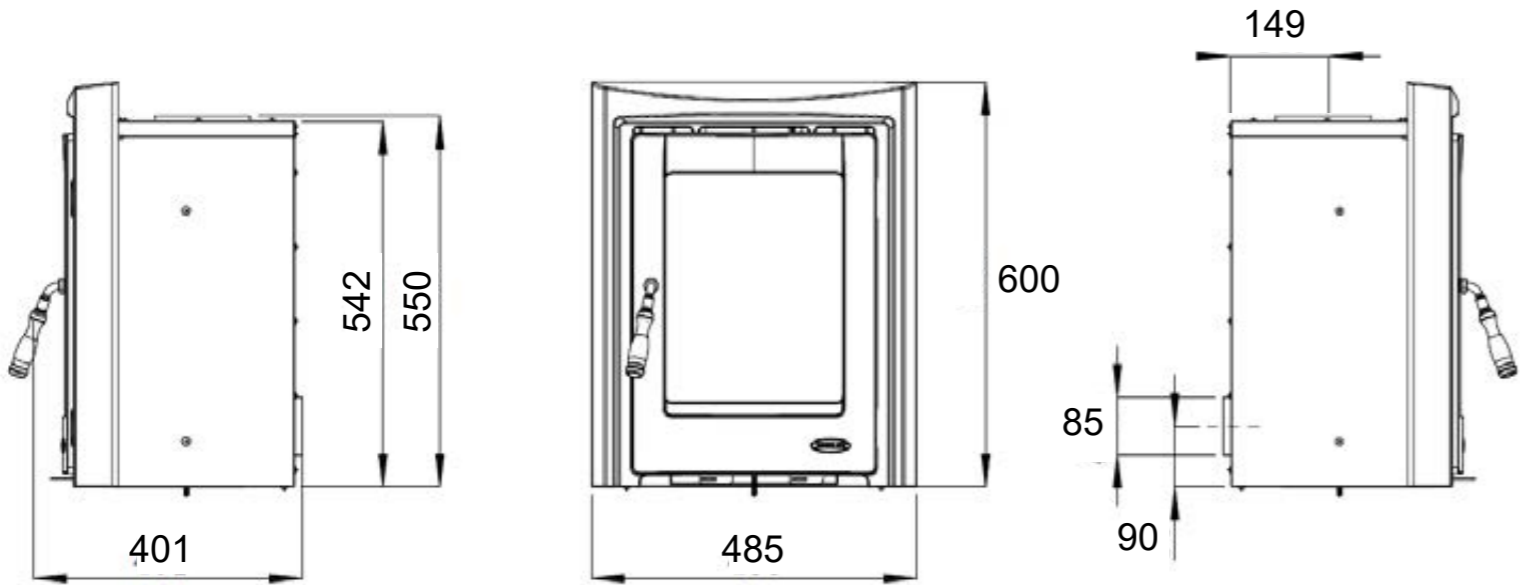


(This stove needs to be connected to an external air source)

Fuel:	Wood burning
Heat Output:	4.6 kW
Efficiency:	83.3%
Flue Size:	127mm
Primary Airtake:	✓
Secondary Airtake:	✓
Advanced Airwash:	
External Air Supply:	✓
2022 Eco Design Ready:	✓
Defra Exempt:	✓
Suitable for 12mm Hearth:	✓

MUCKROSS

The Muckross is a fully cast-iron stove with over 83% efficiency. Its convection-based technology creates unrivalled constant warmth in your room. It will fit most standard 16/18" fireplace openings, which makes this model a firm favourite for insert stoves.



(This stove needs to be connected to an external air source)





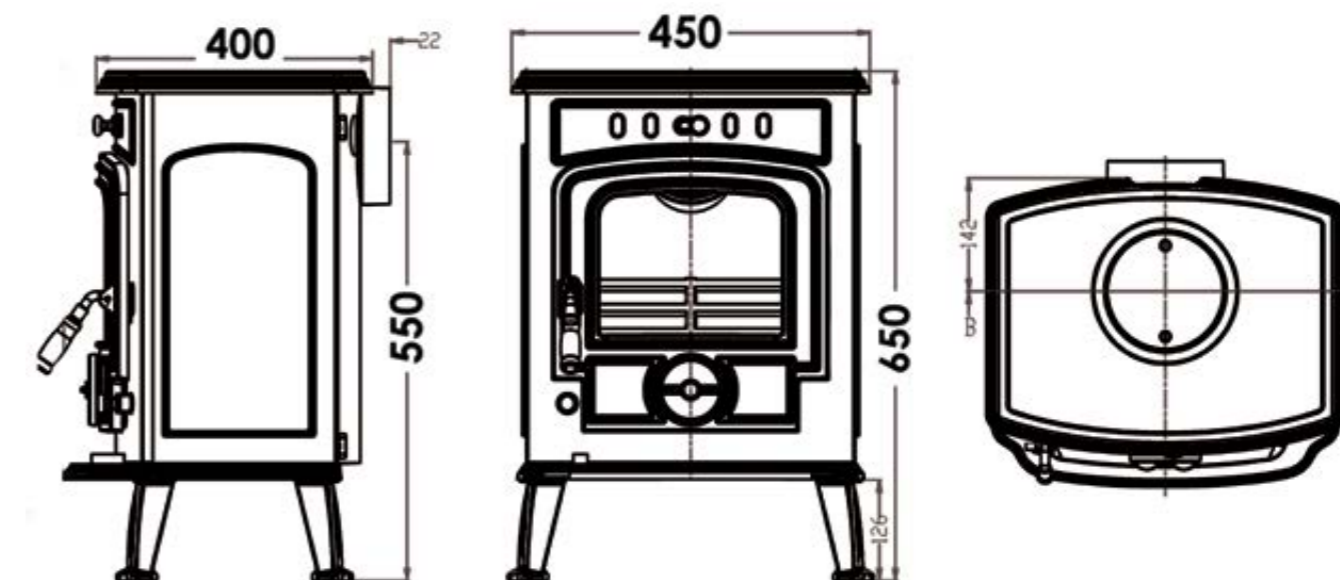
ARAN

The Aran multi fuel stove has been a Henley best seller from the beginning. Its beautiful traditional design will complement any interior setting. Completely manufactured in cast iron, it is also available in a variety of enamel colours.

The pipework is available in matching colours: Black, Enamel Cream, Gallant Grey and French Grey.



Fuel:	Multi Fuel
Heat Output:	5 kW
Efficiency:	77.3%
Energy Rating	A
Flue Size:	127mm
Primary Airtake:	✓
Secondary Airtake:	✓
Advanced Airwash:	
External Air Supply:	✓
Defra Exempt:	✓
HETAS Listed:	✓



ARAN 5kW - ENAMEL FRENCH GREY

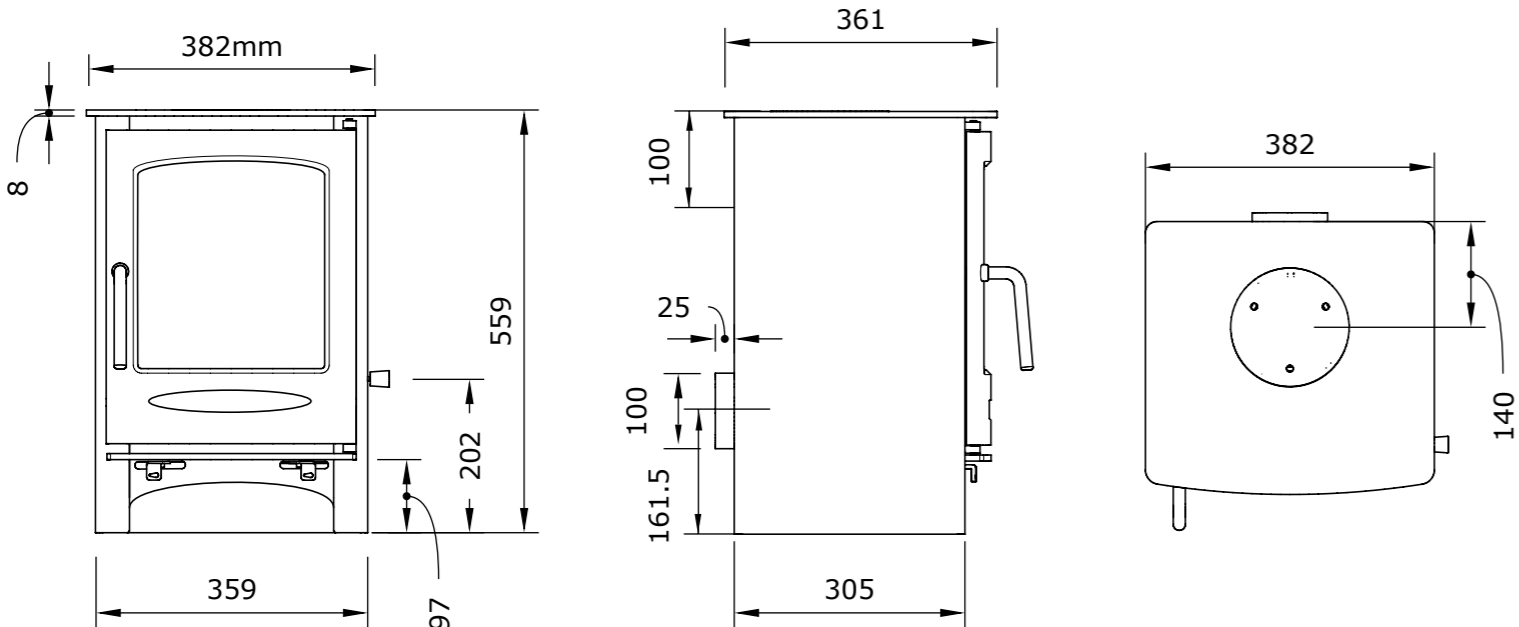
ARAN 5kW - ENAMEL GALLANT GREY

ARAN 5kW - MATT BLACK

Fuel:	Multi Fuel
Heat Output:	5.0 kW
Efficiency:	81.4%
Energy Rating	A+
Flue Size:	127mm
Primary Airtake:	✓
Secondary Airtake:	✓
Advanced Airwash:	✓
External Air Supply:	✓
Defra Exempt:	✓
HETAS Listed:	✓

SHERWOOD 5

Sherwood - New range of Henley External Air, Multi Fuel Stoves. With a sleek and clean design, these stoves are external air ready. The Sherwood 5kW has received an energy rating of A+ with nearly 82% efficiency.



CLASSIC

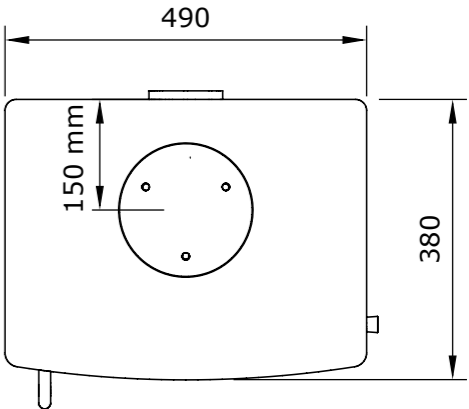
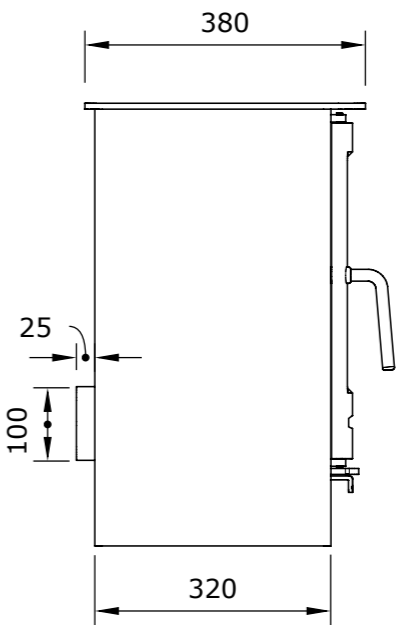
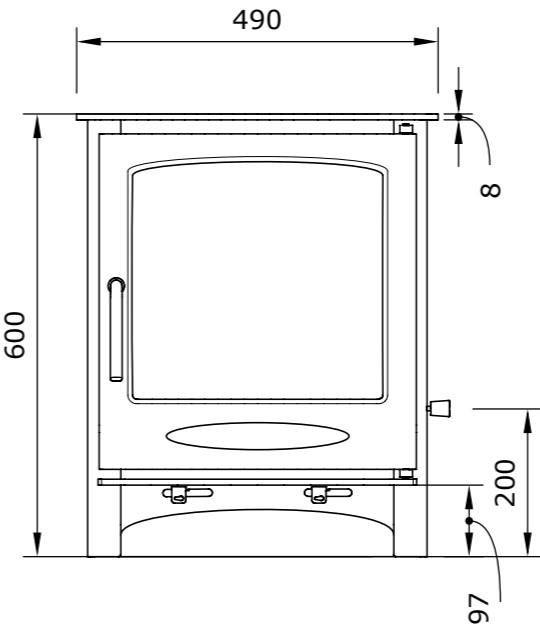


SHERWOOD 8

Sherwood - New range of Henley External Air, Multi Fuel Stoves. With a sleek and clean design, these stoves are external air ready.



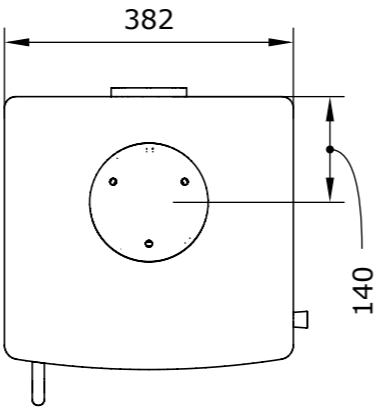
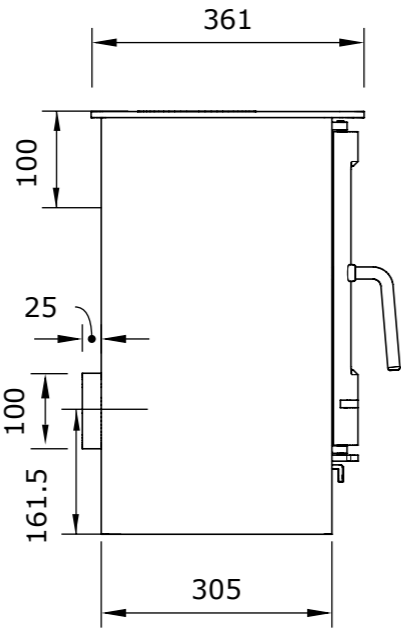
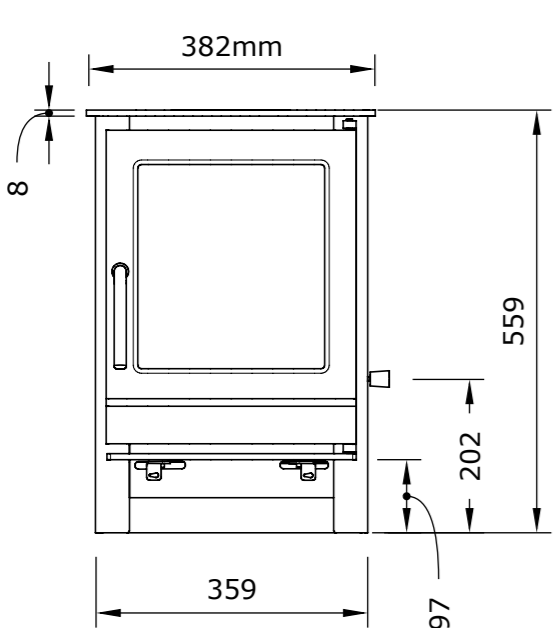
Fuel:	Multi Fuel
Heat Output:	8.0 kW
Efficiency:	78.3%
Energy Rating	A
Flue Size:	153mm
Primary Airtake:	✓
Secondary Airtake:	✓
Advanced Airwash:	✓
External Air Supply:	✓
Defra Exempt:	✓
HETAS Listed:	✓



Fuel:	Multi Fuel
Heat Output:	5.0 kW
Efficiency:	81.4%
Energy Rating	A+
Flue Size:	127mm
Primary Airtake:	✓
Secondary Airtake:	✓
Advanced Airwash:	✓
External Air Supply:	✓
Defra Exempt:	✓
HETAS Listed:	

HAMPSHIRE 5

Hampshire - New range of Henley External Air, Multi Fuel Stoves. With a sleek and clean design, these stoves are external air ready. The Hampshire 5kW has received an energy rating of A+ with nearly 82% efficiency.



CLASSIC

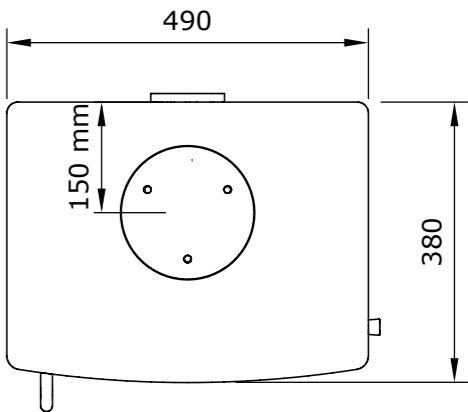
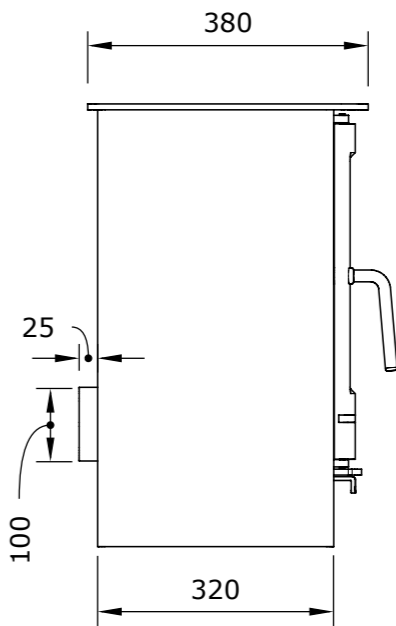
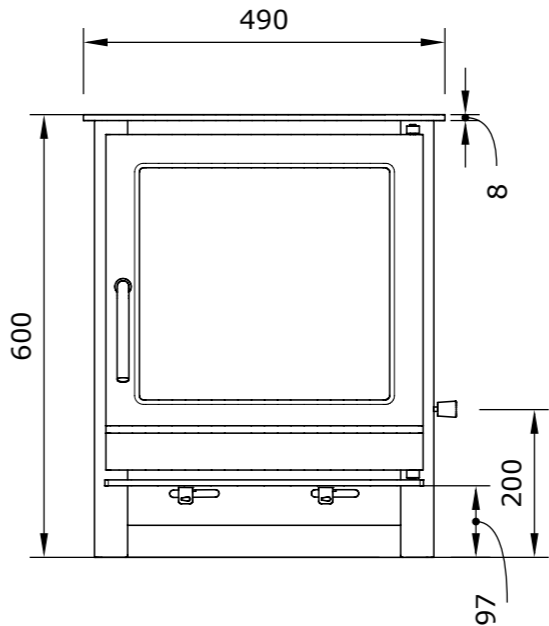


HAMPSHIRE 8

Hampshire - New range of Henley External Air, Multi Fuel Stoves. With a sleek and clean design, these stoves are external air ready.



Fuel:	Multi Fuel
Heat Output:	8.0 kW
Efficiency:	78.3%
Energy Rating	A
Flue Size:	153mm
Primary Airtake:	✓
Secondary Airtake:	✓
Advanced Airwash:	✓
External Air Supply:	✓
Defra Exempt:	✓
HETAS Listed:	



Fuel:	Multi Fuel
Heat Output:	5.0 kW
Efficiency:	83.0%
Energy Rating	A+
Flue Size:	127mm
Primary Airtake:	✓
Secondary Airtake:	✓
Advanced Airwash:	✓
External Air Supply:	
Defra Exempt:	✓
HETAS Listed:	✓

EDEN

The Eden 5kW is a compact & reliable multi fuel Stove. Its superb cast iron construction and traditional design combined with modern technology, make this stove a popular choice for any customer. The Eden has achieved 82.8% Efficiency when burning Manufactured Smokeless Fuel.

defra exempt

for Smoke Control Areas

CE

BS EN 13240

A+

CLASSIC

62

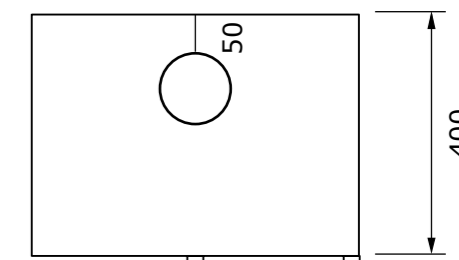
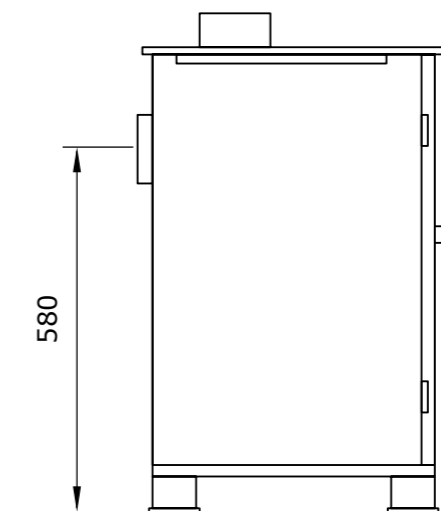
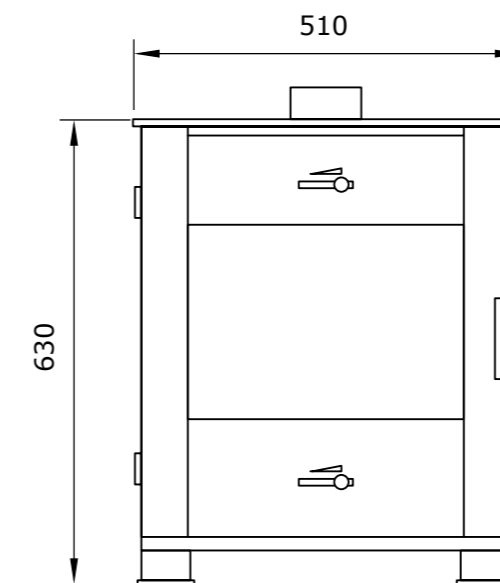


CHELTHENHAM

The new multi fuel Cheltenham 5kW combines classic style with exemplary performance. The Cheltenham 5kW will operate at efficiency levels between 71% and 76% & precise air controls allow minimal heat loss into the flue.



Fuel:	Multi Fuel
Heat Output:	5.0 kW
Efficiency:	75.0%
Energy Rating	A
Flue Size:	127mm
Primary Airtake:	✓
Secondary Airtake:	✓
Advanced Airwash:	
External Air Supply:	
Defra Exempt:	✓
HETAS Listed:	

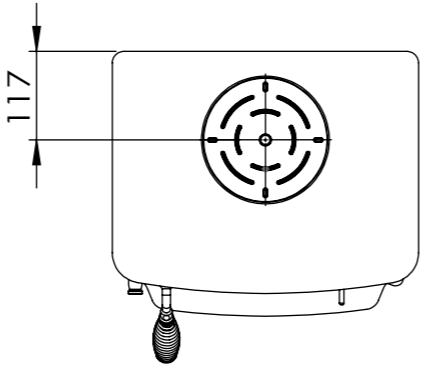
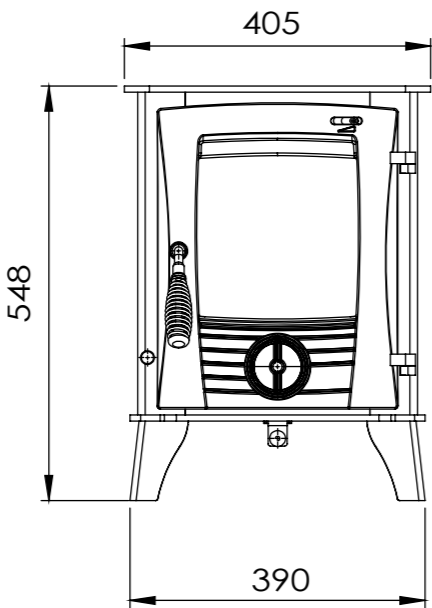
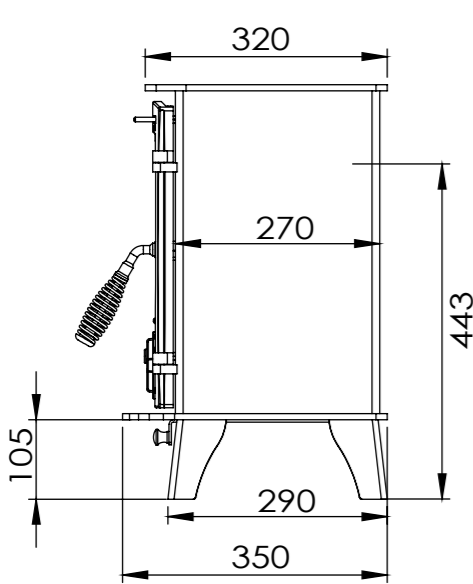


Fuel:	Multi Fuel
Heat Output:	5.0 kW
Efficiency:	80.0%
Energy Rating	A
Flue Size:	127mm
Primary Airtake:	✓
Secondary Airtake:	✓
Advanced Airwash:	✓
External Air Supply:	✓
Defra Exempt:	✓
HETAS Listed:	✓

DRUID

The Druid multi-fuel range available in two sizes, a 5kW and 8kW room heaters. Constructed from high grade steel with a heavy cast iron door.

Both models boast high efficiencies and are defra exempt for smoke control aras.



CLASSIC

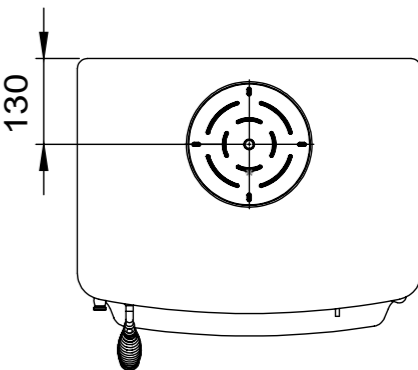
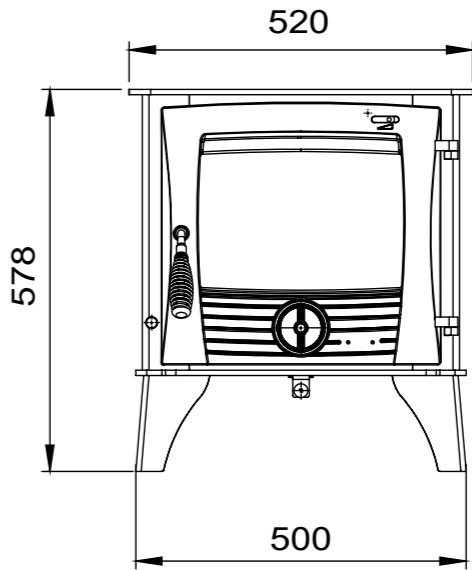
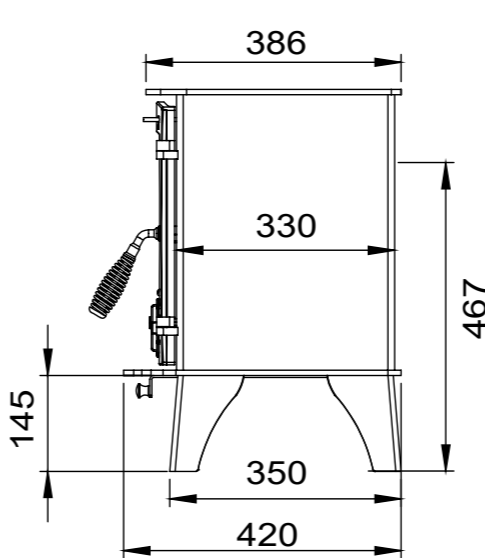


DRUID

The Druid multi-fuel range available in two sizes, a 5kW and 8kW room heater. Constructed from high grade steel with a heavy cast iron door. Both models boast high efficiencies and are defra exempt for smoke control aras.



Fuel:	Multi Fuel
Heat Output:	8.0 kW
Efficiency:	76.0%
Energy Rating	A
Flue Size:	153mm
Primary Airtake:	✓
Secondary Airtake:	✓
Advanced Airwash:	✓
External Air Supply:	✓
Defra Exempt:	✓
HETAS Listed:	✓

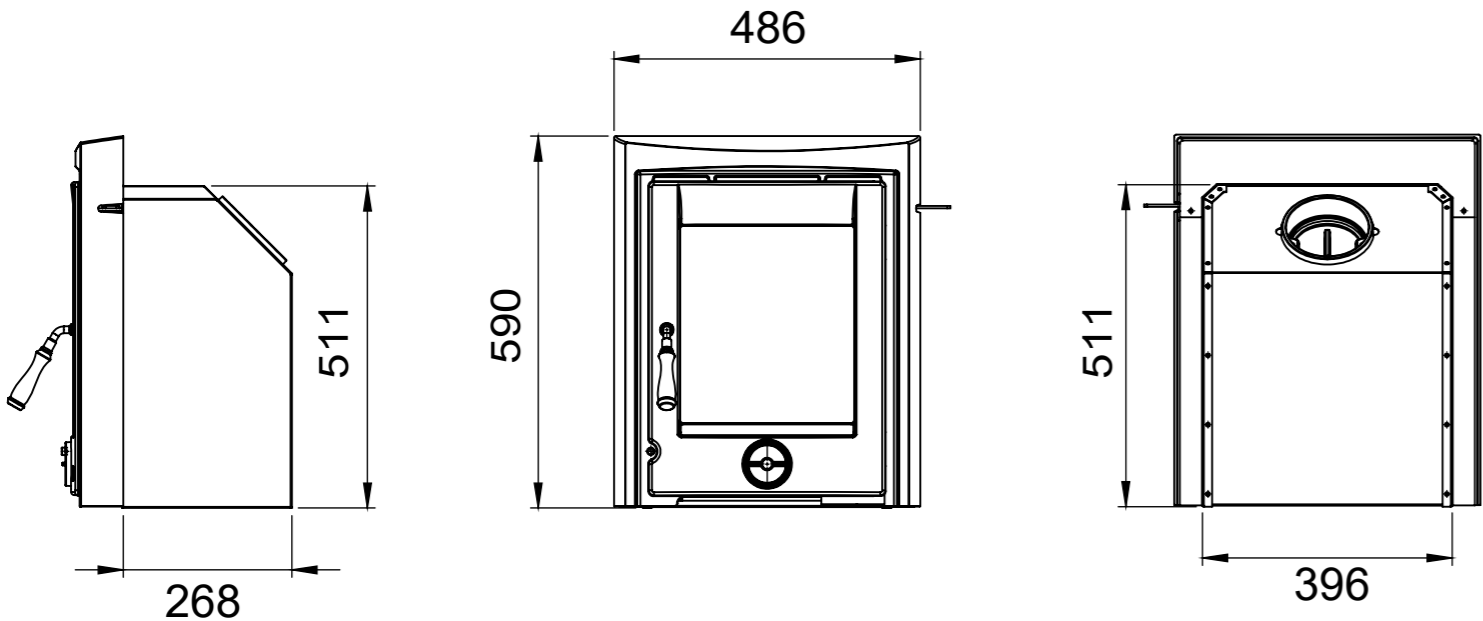


APOLLO

Fuel:	Wood Burning
Heat Output:	5.0 kW
Efficiency:	79.0%
Energy Rating	A
Flue Size:	127mm
Primary Airtake:	✓
Secondary Airtake:	✓
Advanced Airwash:	✓
External Air Supply:	
Defra Exempt:	✓
HETAS Listed:	✓

One of our best-selling models, the Apollo insert room heater stove is a fully cast iron multi fuel stove with over 79% efficiency. Its convection based technology creates unrivalled constant warmth in your room.

It will fit most standard 16"/18" fireplace openings.



CLASSIC



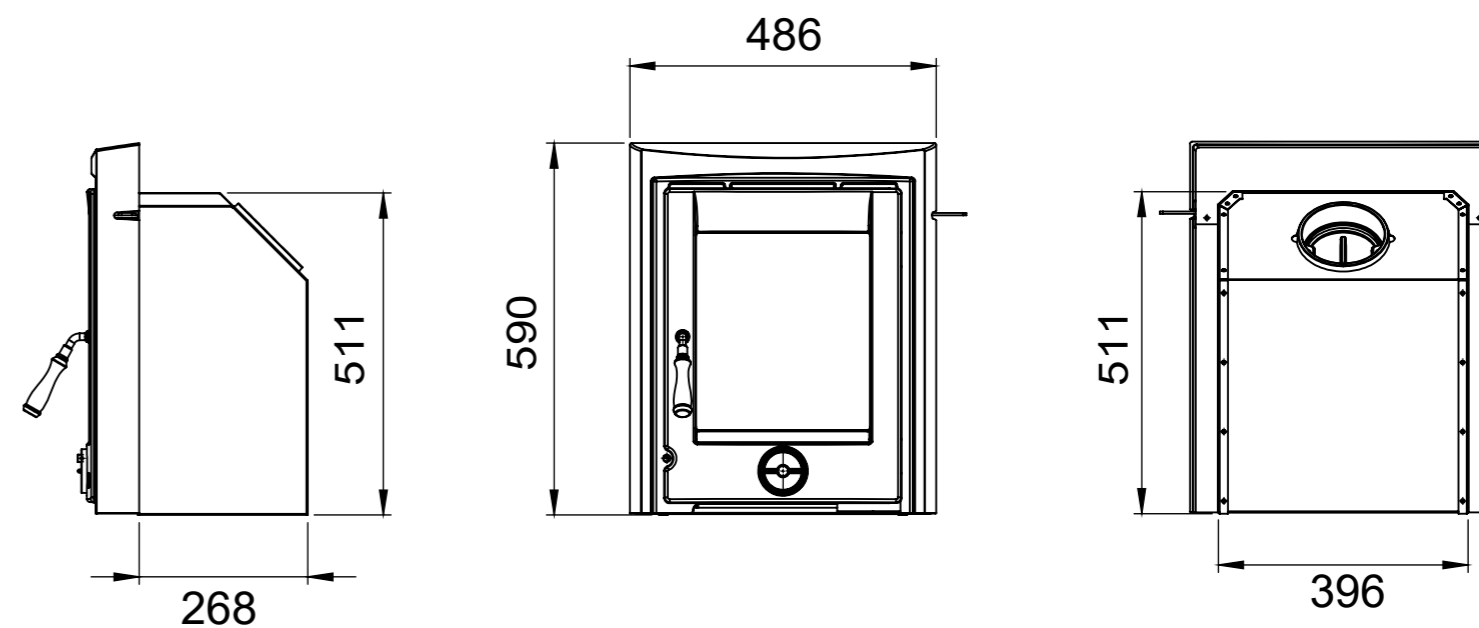
ARKLOW

The Arklow is another staple in our Henley insert range. A fully cast iron multi fuel stove with over 79% efficiency. The Arklow has been tested with distance to combustibles of 300mm to the top, which makes it suitable for use with most timber surrounds.

Please Note: Each timber surround can be finished with different grades of varnish. Henley Stoves cannot guarantee that some timber surrounds will not warp, shrink or split. As each installation is unique to the property, some timber surrounds may get too hot & will need to be replaced.



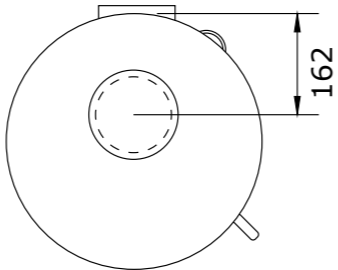
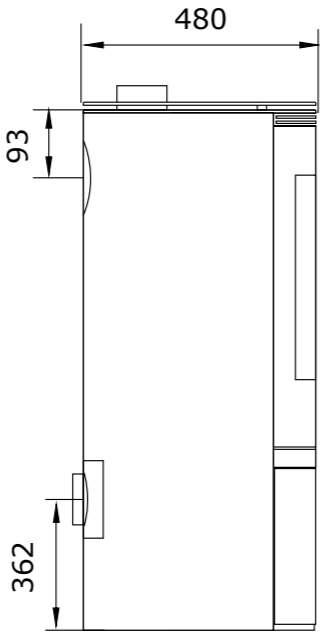
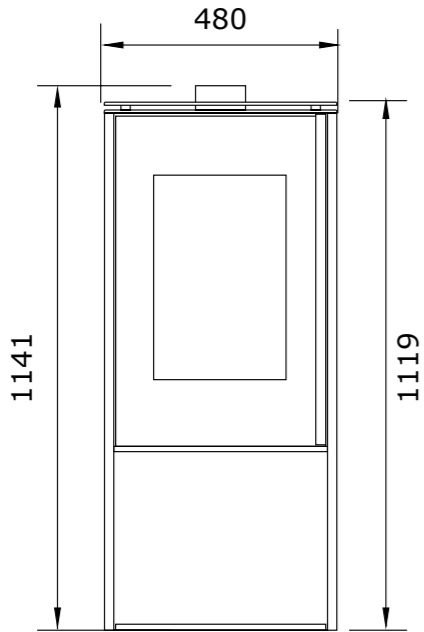
Fuel:	Wood Burning
Heat Output:	5.0 kW
Efficiency:	79.0%
Energy Rating	A
Flue Size:	127mm
Primary Airtake:	✓
Secondary Airtake:	✓
Advanced Airwash:	✓
External Air Supply:	
Defra Exempt:	
HETAS Listed:	✓



Fuel:	Wood Burning
Heat Output:	5.0kW
Efficiency:	84.0%
Energy Rating	A+
Flue Size:	153mm
Primary Airtake:	✓
Secondary Airtake:	
Advanced Airwash:	
External Air Supply:	✓
Defra Exempt:	✓
HETAS Listed:	✓

BARCELONA

The Barcelona stove combines aesthetics and functionality with high quality vermiculite firebox lining & unique ‘comfort close’ hydraulic door lock. The Barcelona has achieved 84% efficiency, giving it an A+ energy rating.The Barcelona can only be used with Wood or Briquette Fuel.



EUROPEAN

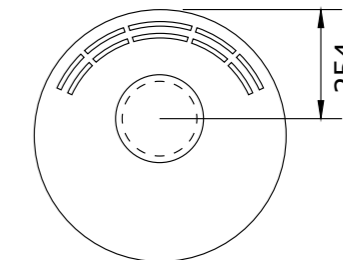
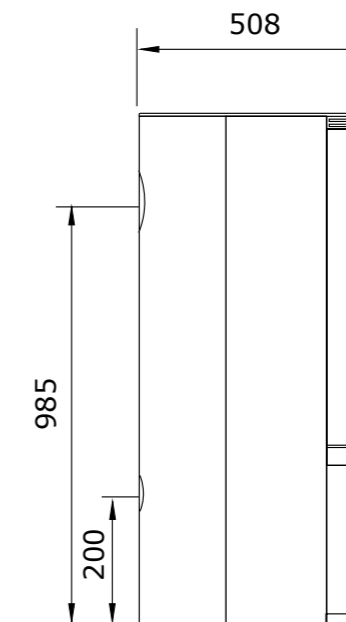
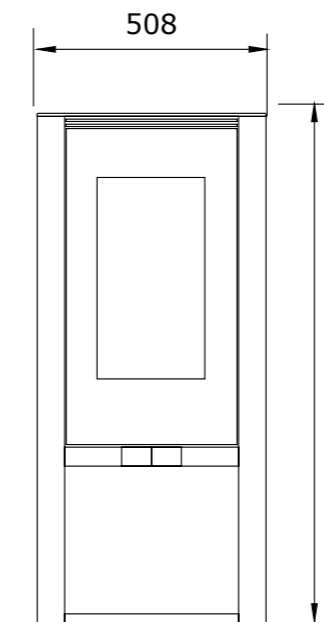


ELITE G1

The Henley Stoves Elite Collection uses only the highest quality material to produce the highest quality stoves. Each Elite Stove incorporates a hermetically sealed chamber that allows for correct combustion regulation, which results in less fuel consumption & higher efficiency.



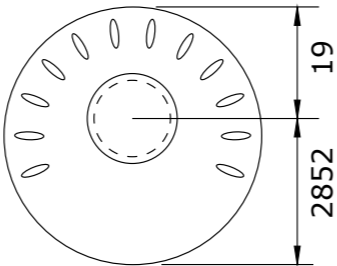
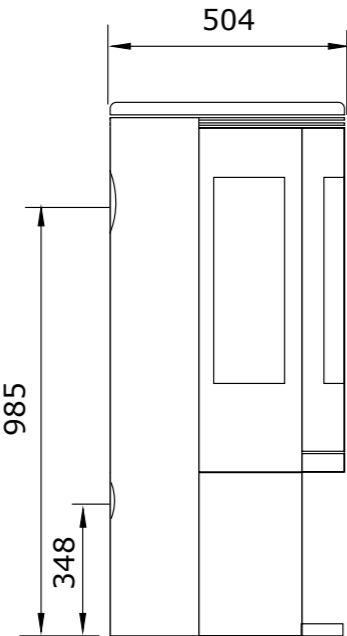
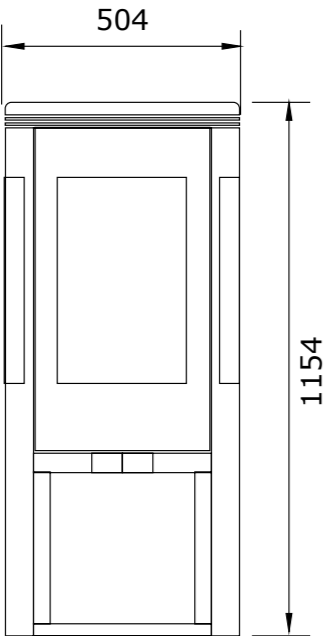
Fuel:	Multi Fuel
Heat Output:	7.2kW
Efficiency:	82.0%
Energy Rating	A+
Flue Size:	153mm
Primary Airtake:	✓
Secondary Airtake:	✓
Advanced Airwash:	
External Air Supply:	✓
Defra Exempt:	✓
HETAS Listed:	



Fuel:	Multi Fuel
Heat Output:	6.4 kW
Efficiency:	78.0%
Energy Rating	A
Flue Size:	153mm
Primary Airtake:	✓
Secondary Airtake:	✓
Advanced Airwash:	
External Air Supply:	✓
Defra Exempt:	✓
HETAS Listed:	

ELITE G3

The Henley Stoves Elite Collection uses only the highest quality material to produce the highest quality stoves. Each Elite Stove incorporates a hermetically sealed chamber that allows for correct combustion regulation, which results in less fuel consumption & higher efficiency.



EUROPEAN



BERLIN

The Berlin stove is cylindrical in design with a three panelled glass exterior enabling you to enjoy the dancing flame from different angles. The Berlin can be positioned anywhere in your room against a flat wall as a freestanding unit.

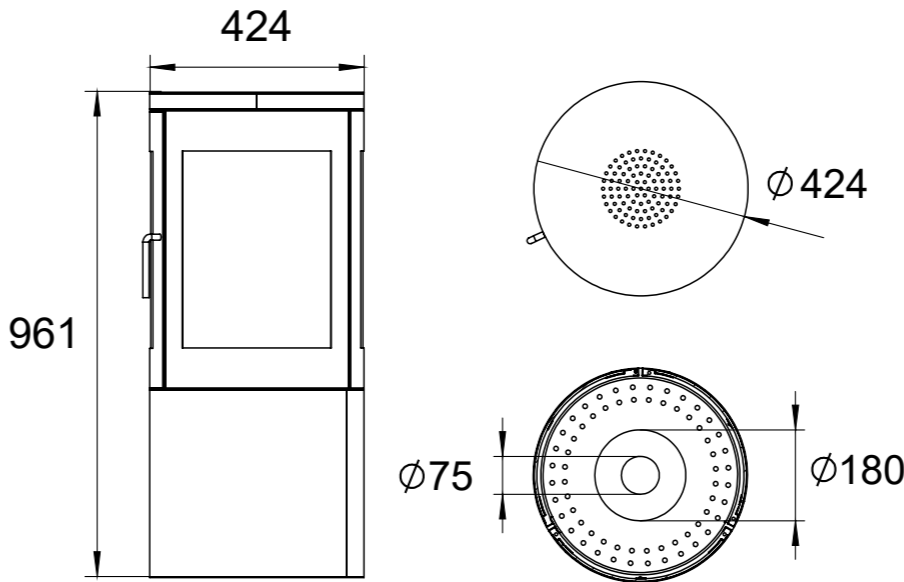


Fuel:	Bio Ethanol
Style:	Freestanding
Heat Output:	1 kW
Flue Capacity:	2 L
Burn Times:	up to 5hrs
Colour Options:	Black

Suitable for Smoke Control Areas:

Suitable for 12mm Hearth:

Ensure your bio-ethanol fire is used in a well ventilated space.
Always allow 20 minutes cool down before adding more bioethanol fuel.



PARIS

Fuel:	Bio Ethanol
Style:	Freestanding
Heat Output:	1 kW
Flue Capacity:	1.2 L
Burn Times:	up to 5hrs
Colour Options:	Black
	White
Suitable for Smoke Control Areas:	✓
Suitable for 12mm Hearth:	

Ensure your bio-ethanol fire is used in a well ventilated space.
Always allow 20 minutes cool down before adding more bioethanol fuel.

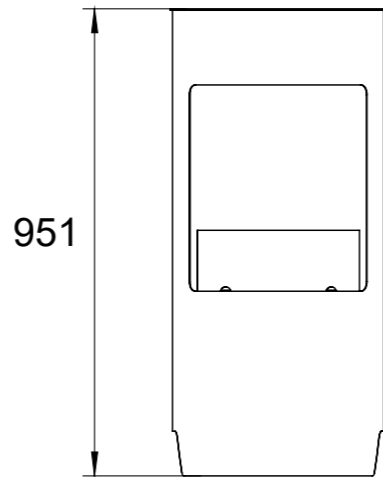
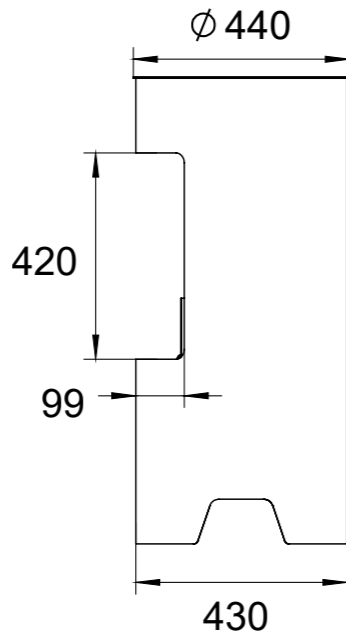
The Paris combines sleek style with the simplicity of bio-ethanol to create an impressive wood burner style bio ethanol stove. The Paris is perfect for the modern-day home as no chimney or flue is required and it can simply be installed in any room whilst still proving an eye-catching centre piece.



• White



• Black



BIO ETHANOL



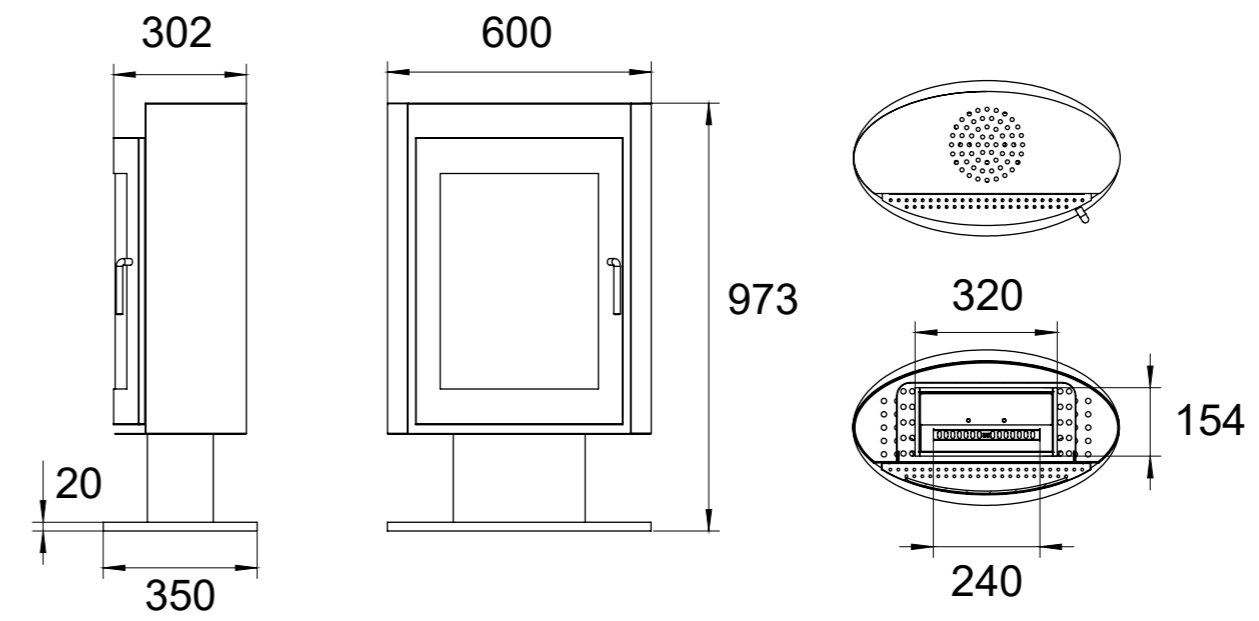
MADRID

The Madrid comes in a black graphite satin finish and will bring warmth and character to any space. Curved design features make this model modern yet classic, making it suitable for all customer tastes whether it is a contemporary interior in a new build home or a cottage-style room with a modern twist.



Fuel:	Bio Ethanol
Style:	Freestanding
Heat Output:	1 kW
Flue Capacity:	1.5 L
Burn Times:	up to 4hrs
Colour Options:	Black
Suitable for Smoke Control Areas: ✓	
Suitable for 12mm Hearth:	

Ensure your bio-ethanol fire is used in a well ventilated space. Always allow 20 minutes cool down before adding more bioethanol fuel.

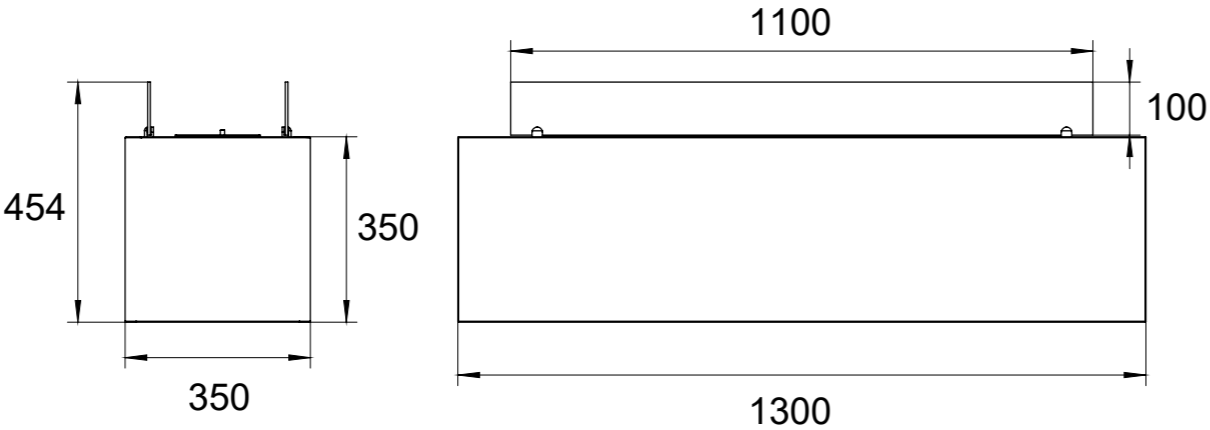


Fuel:	Bio Ethanol
Style:	Freestanding
Heat Output:	1 kW
Flue Capacity:	6.5 L
Burn Times:	up to 5hrs
Colour Options:	White
Suitable for Smoke Control Areas:	✓
Suitable for 12mm Hearth:	

Ensure your bio-ethanol fire is used in a well ventilated space.
Always allow 20 minutes cool down before adding more bioethanol fuel.

OPTIMYST

The Optimyst is one of the most modern models in the Henley bio-stove range, boasting a sleek white finish and a brushed steel burner which makes the Optimyst a quality fire. This freestanding unit can be used as a standalone burner or combined with a fireplace for a unique focal point.



BIO ETHANOL



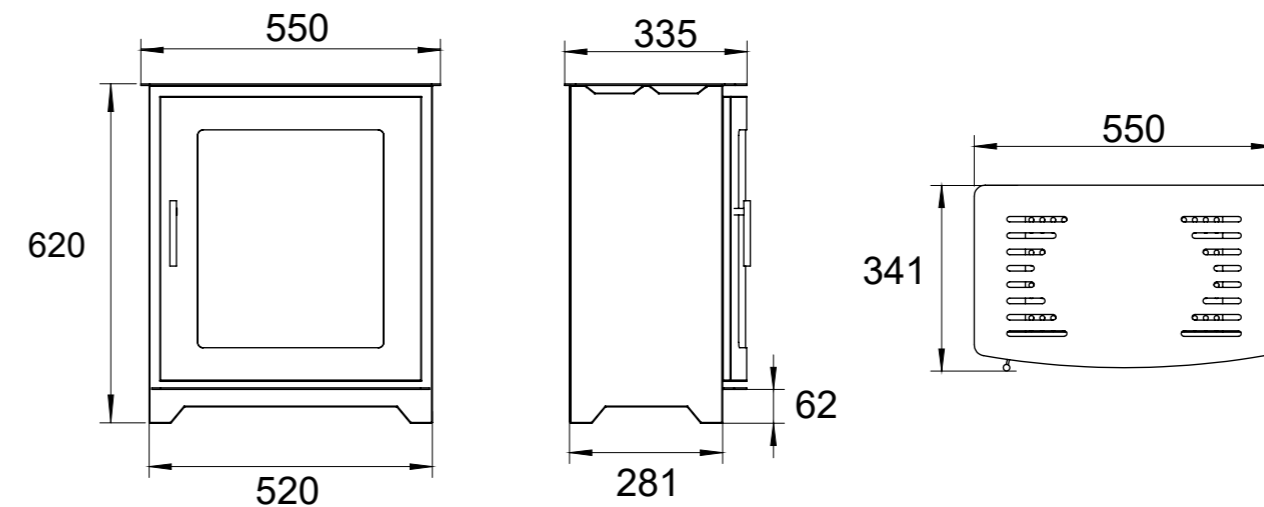
DALEWOOD LANDSCAPE


The Dalewood Landscape Bio is the perfect solution for bringing the magic of a traditional wood burner into your home without the need for a chimney or flue. With a sleek body and large viewing window, this model allows your chosen room to be flooded with ambient light from the dancing flames.



Fuel:	Bio Ethanol
Style:	Freestanding
Heat Output:	1 kW
Flue Capacity:	1.2 L
Burn Times:	up to 5hrs
Colour Options:	Black
Suitable for Smoke Control Areas:	✓
Suitable for 12mm Hearth:	

Ensure your bio-ethanol fire is used in a well ventilated space.
Always allow 20 minutes cool down before adding more bioethanol fuel.

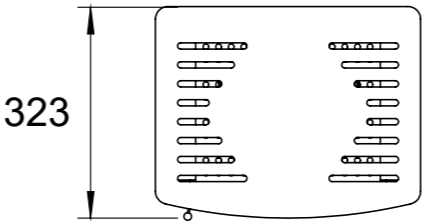
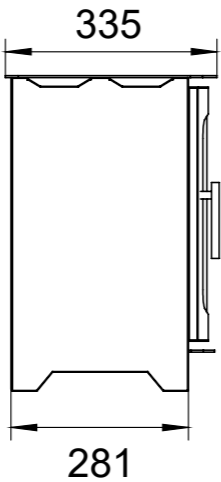
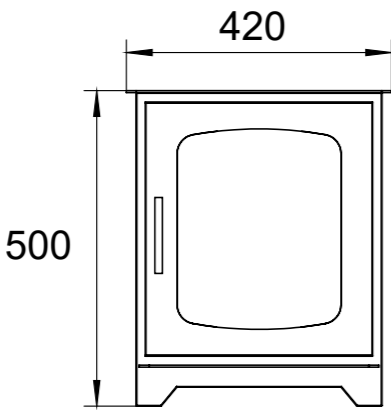


Fuel:	Bio Ethanol
Style:	Freestanding
Heat Output:	1 kW
Flue Capacity:	1.5 L
Burn Times:	up to 4hrs
Colour Options:	Black
Suitable for Smoke Control Areas: 	
Suitable for 12mm Hearth:	

Ensure your bio-ethanol fire is used in a well ventilated space.
Always allow 20 minutes cool down before adding more bioethanol fuel.

HAZELWOOD COMPACT

The Hazelwood Compact Bio is a stylish and contemporary take on classic wood-burning stoves without the need for a chimney, flue, installation or maintenance. This fireplace is available in a black satin graphite finish and will bring character and warmth to any home, whether you prefer a more traditional or contemporary interior design.




BIO ETHANOL



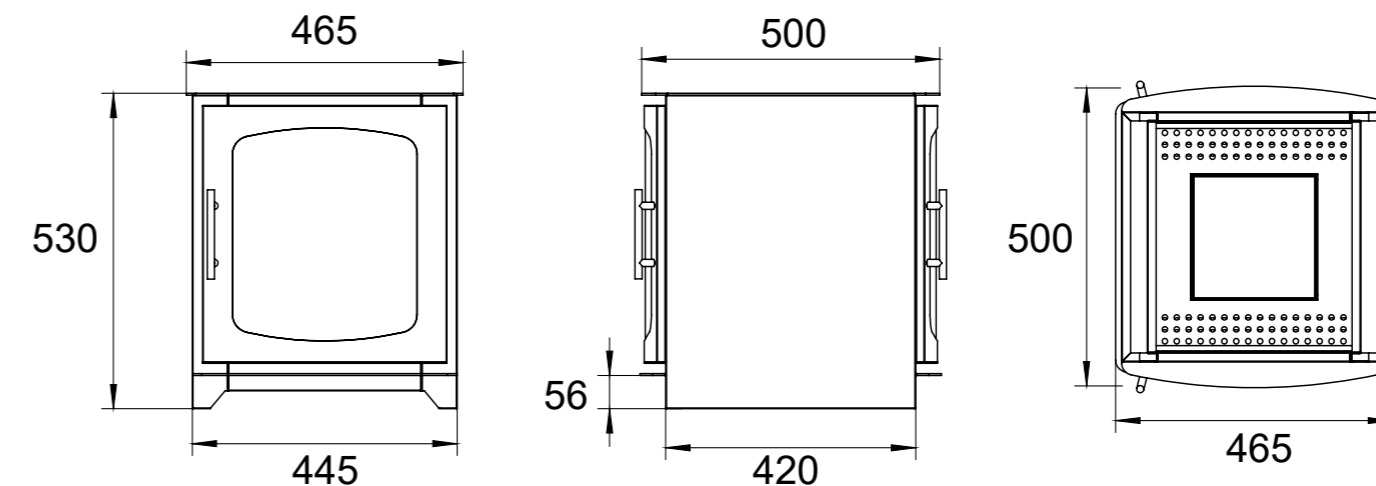
HAZELWOOD DOUBLE SIDE


The Hazelwood Double Sided Bio model has a double sided door which allows the fire inside to be viewed from two separate angles. This feature allows this model to provide a stylish focal point to admire and enable you to enjoy the ambience of a real flame in the comfort of your home.



Fuel:	Bio Ethanol
Style:	Freestanding
Heat Output:	1 kW
Flue Capacity:	3 L
Burn Times:	up to 9.5hrs
Colour Options:	Black
Suitable for Smoke Control Areas: 	
Suitable for 12mm Hearth:	

Ensure your bio-ethanol fire is used in a well ventilated space.
Always allow 20 minutes cool down before adding more bioethanol fuel.

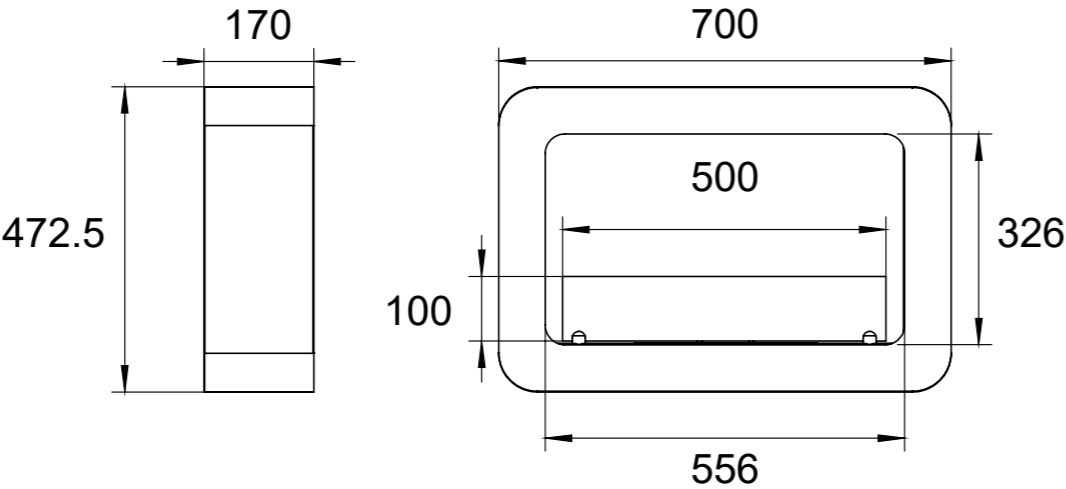


Fuel:	Bio Ethanol
Style:	Wall Mounted
Heat Output:	1 kW
Flue Capacity:	1 L
Burn Times:	up to 3hrs
Colour Options:	Black
Suitable for Smoke Control Areas: 	
Suitable for 12mm Hearth:	

Ensure your bio-ethanol fire is used in a well ventilated space.
Always allow 20 minutes cool down before adding more bioethanol fuel.

CRETE

The Crete is a contemporary and unique wall mounted bio ethanol fire, providing malting flames that seemingly dance with one another. When lit, the Crete creates a breath-taking ambiance that cannot be equated. With its bold sophisticated matte black outer frame, it represents a poised yet assertive look.



BIO ETHANOL



HAMBURG

The Hamburg has a sleek contemporary design that will make a statement in any room and allows it to work with any décor. The dancing flames you will have will create a warm, mellow, luxurious atmosphere. It will create a focal point of distinction in your living room, bedroom, family room, dining room... anywhere you wish to enjoy a fire.

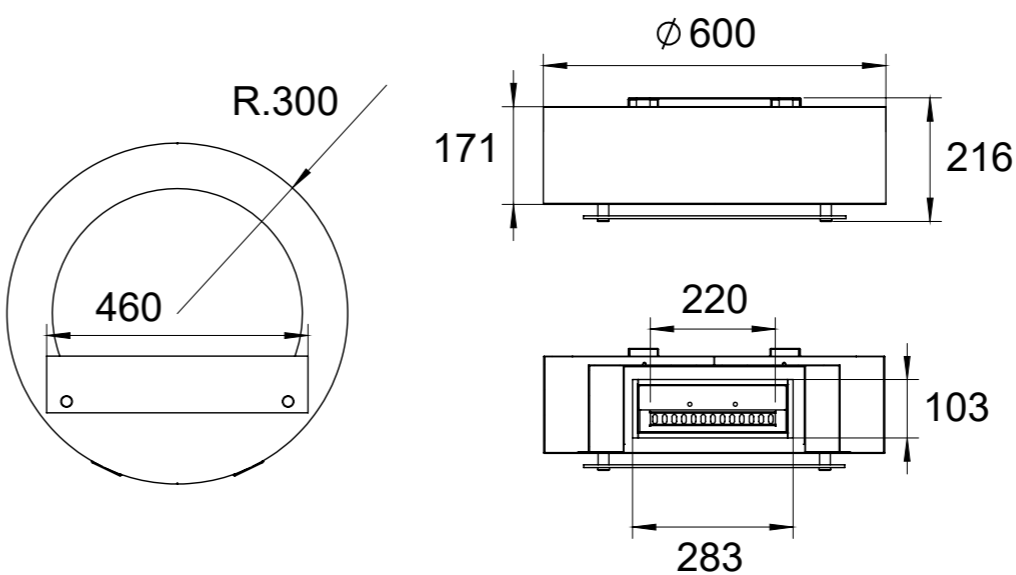


Fuel:	Bio Ethanol
Style:	Wall Mounted
Heat Output:	1 kW
Flue Capacity:	1 L
Burn Times:	up to 3hrs
Colour Options:	White

Suitable for Smoke Control Areas:

Suitable for 12mm Hearth:

Ensure your bio-ethanol fire is used in a well ventilated space.
Always allow 20 minutes cool down before adding more bioethanol fuel.





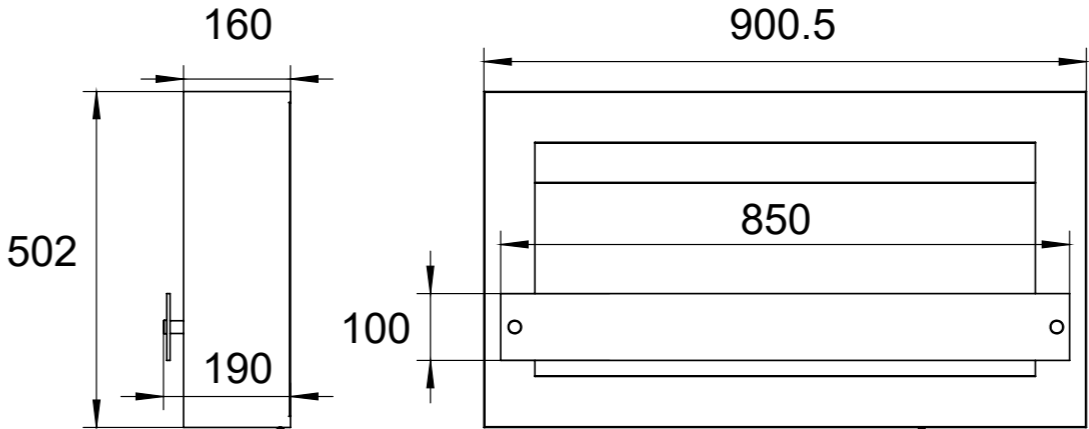
OSLO

The Oslo is a humble framed wall mounted contemporary fireplace which is ideal for compact snug rooms. It is composed of a stylish white or black frame, double burner and a protective tempered glass base that makes an astonishingly bold statement.



Fuel:	Bio Ethanol
Style:	Wall Mounted
Heat Output:	1 kW
Flue Capacity:	1.5 L x 2
Burn Times:	up to 4.5hrs
Colour Options:	Black
	White
Suitable for Smoke Control Areas:	✓
Suitable for 12mm Hearth:	

Ensure your bio-ethanol fire is used in a well ventilated space.
Always allow 20 minutes cool down before adding more bioethanol fuel.



• White

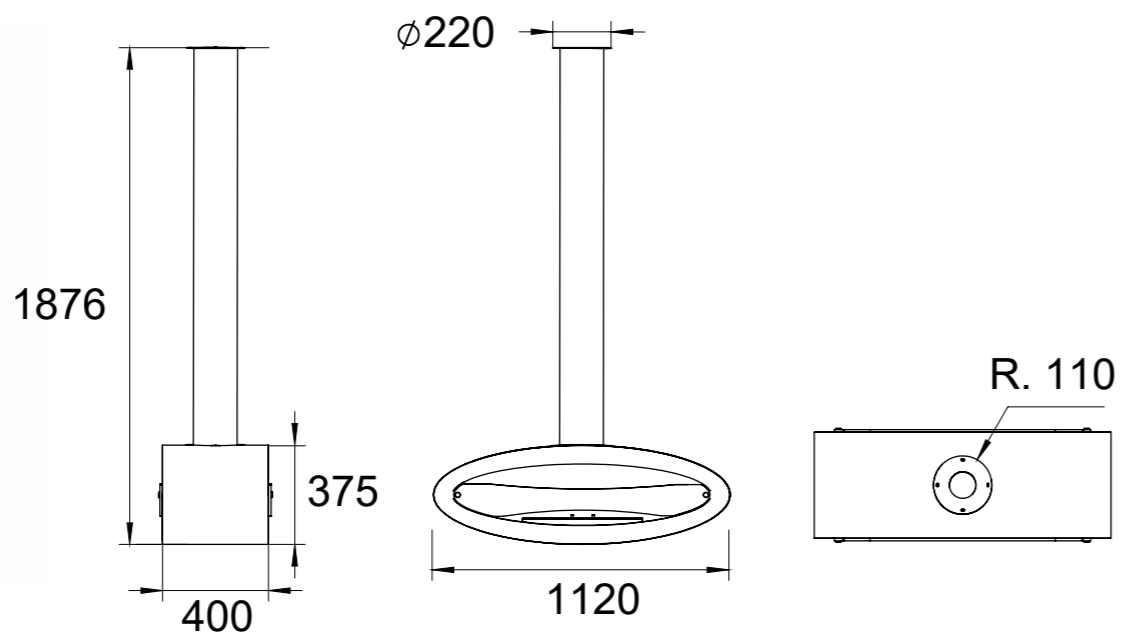


• Black

BUDAPEST

Fuel:	Bio Ethanol
Style:	Ceiling Mounted
Heat Output:	1 kW
Flue Capacity:	3 L
Burn Times:	up to 7hrs
Colour Options:	White
	Silver
Suitable for Smoke Control Areas:	✓
Suitable for 12mm Hearth:	

The Budapest model is built to naturally be mounted from the ceiling. Available in both white and silver, this stove is the epitome of contemporary elegance. By using the ceiling to mount the fireplace, you get the feeling of a bio fireplace that floats in mid-air – an eye-catching sight that will create a unique feeling in every room



BIO ETHANOL



MILAN

The Milan is both graceful and unique, designed to be mounted on the ceiling. With its state of the art and eye-catching design, this bio fireplace is exclusive and will naturally fall into its surroundings. Since this fireplace is open, the joy of the beautiful flames can be maximized from both sides.

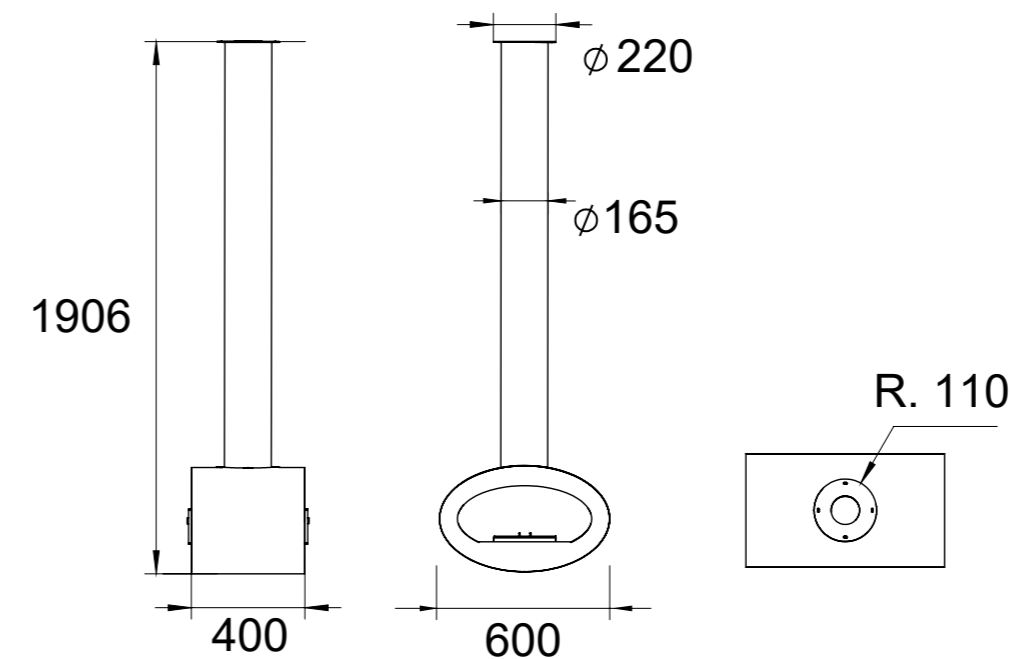


Fuel:	Bio Ethanol
Style:	Ceiling Mounted
Heat Output:	1 kW
Flue Capacity:	1.5 L
Burn Times:	up to 4hrs
Colour Options:	Black

Suitable for Smoke Control Areas:

Suitable for 12mm Hearth:

Ensure your bio-ethanol fire is used in a well ventilated space.
Always allow 20 minutes cool down before adding more bioethanol fuel.



BURNERS

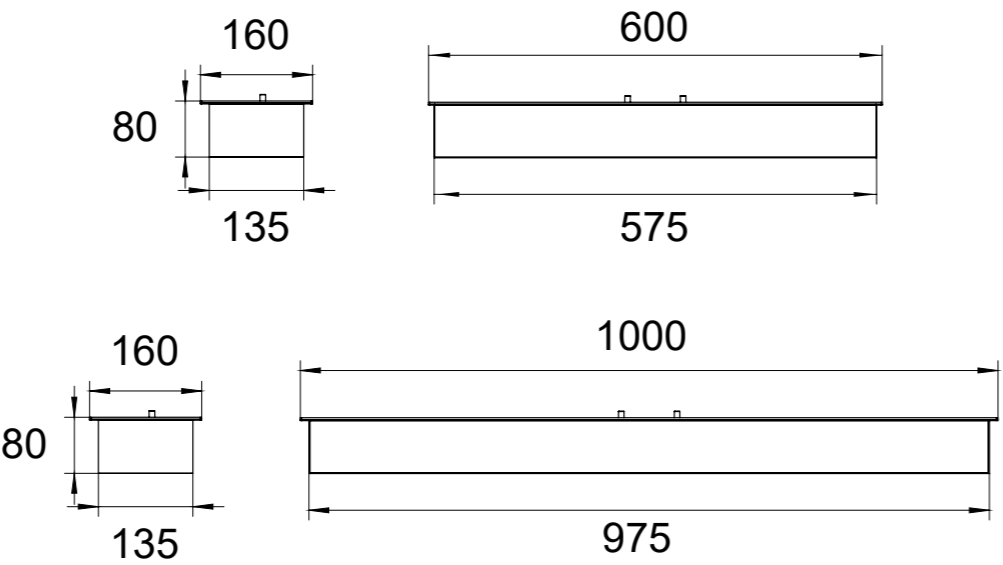
Fuel:	Bio Ethanol
Style:	Installation
Heat Output:	1 kW
Flue Capacity:	4 L / 6.5 L
Burn Times up to:	6 hrs / 5 hrs
Finish:	Stainless Steel

Suitable for Smoke Control Areas:	✓
Suitable for 12mm Hearth:	

Ensure your bio-ethanol fire is used in a well ventilated space.
Always allow 20 minutes cool down before adding more bioethanol fuel.

BURNER | 600 & 1000

The Burner 600 and 1000 are two inserts we carry in the Henley range. Their versatile design enables models to be installed in a wide range of outdoor applications making it a talking point at gatherings. Manufactured from sleek stainless steel this model is sure to turn heads no matter whether it's indoors or outdoors.



BIO ETHANOL



SMART DEVICE
SMART LIFE APP READY

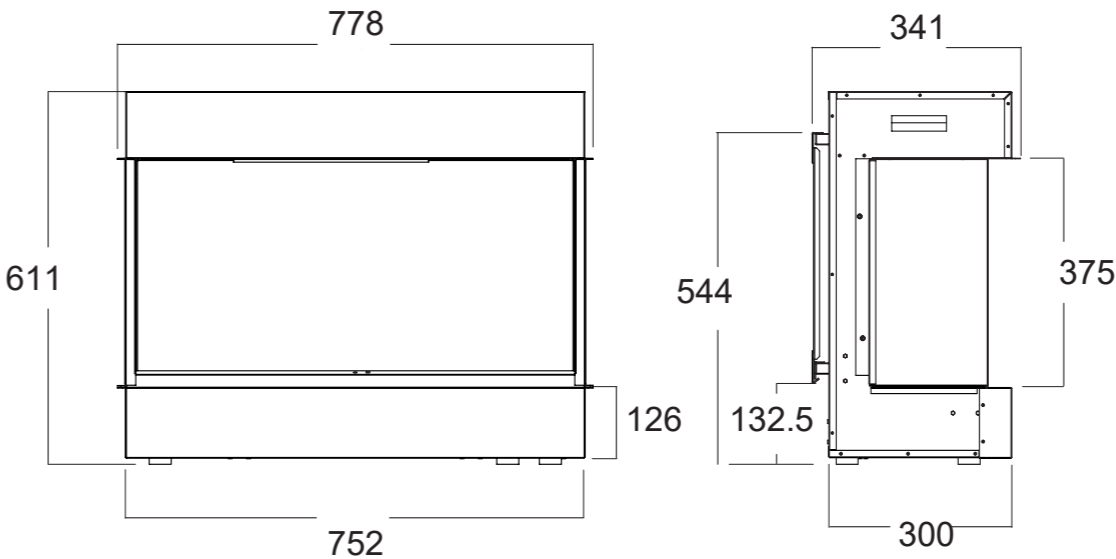


AURORA 750

Introducing our new Aurora Electric Fire Collection. Using 3D Flame Projection Technology the Aurora Collection provide the look and feel of a real fire and with it's fully customizable flame set and fire bed you can create a fire to suit you.

- | 2kW heat output
- | 3 sided Glass viewing area
- | 3D flame projection technology
- | Crystal embers & realistic logs
- | 4 flame brightness settings & adaptive controls
- | Includes remote control and wall fixings

Type:	Electric
Style:	Installation
Heat Output:	2 kW
Fuel Types:	Crytal embers
	Realistic logs
Control Options:	Manual Remote,
Smart Ready:	Smart Life App
width :	778mm
height :	611mm
depth :	341mm
weight :	35kg





SMART DEVICE

FULL CONTROL
FROM YOUR PHONE

SIMPLY DOWNLOAD
SMART LIFE APP

AURORA

AURORA 1100

Introducing our new Aurora Electric Fire Collection. Using 3D Flame Projection Technology the Aurora Collection provide the look and feel of a real fire and with it's fully customizable flame set and fire bed you can create a fire to suit you.

- | 2kW heat output
- | 3 sided Glass viewing area
- | 3D flame projection technology
- | Crystal embers & realistic logs
- | 4 flame brightness settings & adaptive controls
- | Includes remote control and wall fixings

Type:	Electric
Style:	Installation
Heat Output:	2 kW
Fuel Types:	Crytal embers
	Realistic logs
Control Options:	Manual Remote,
Smart Ready:	Smart Life App
width :	1,128mm
height :	611mm
depth :	341mm
weight :	45kg



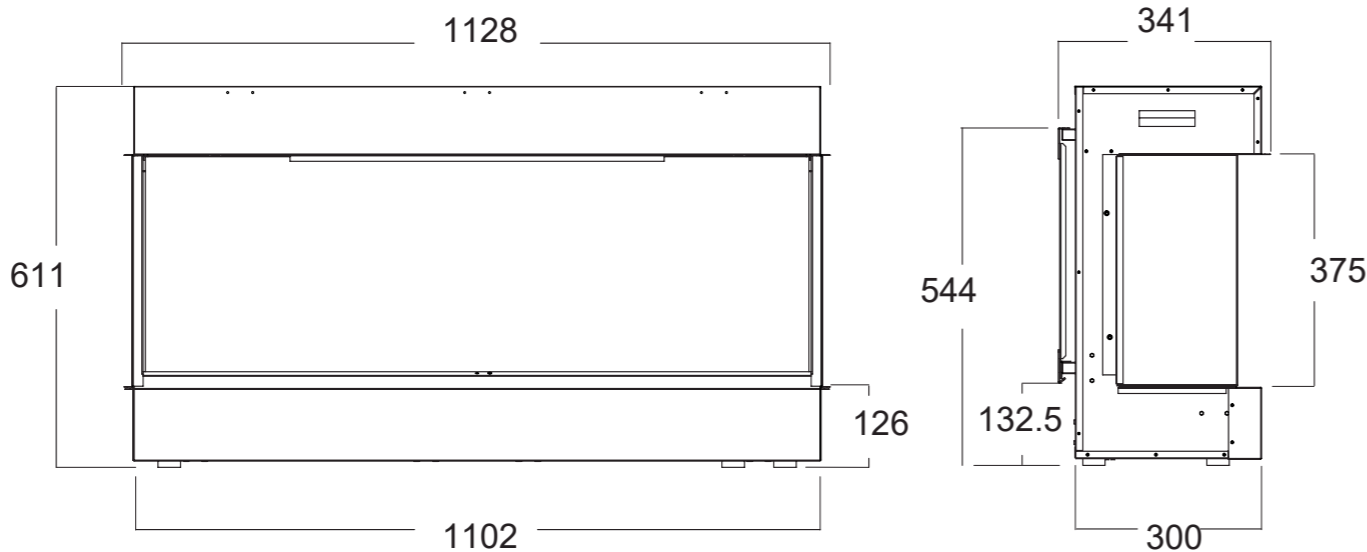
SMART DEVICE

FULL CONTROL

FROM YOUR PHONE

SIMPLY DOWNLOAD

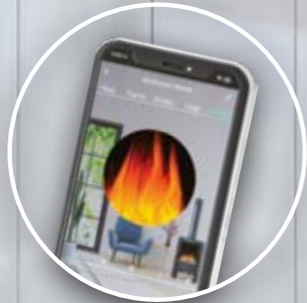
SMART LIFE APP



SMART DEVICE
SMART LIFE APP READY



ELECTRIC



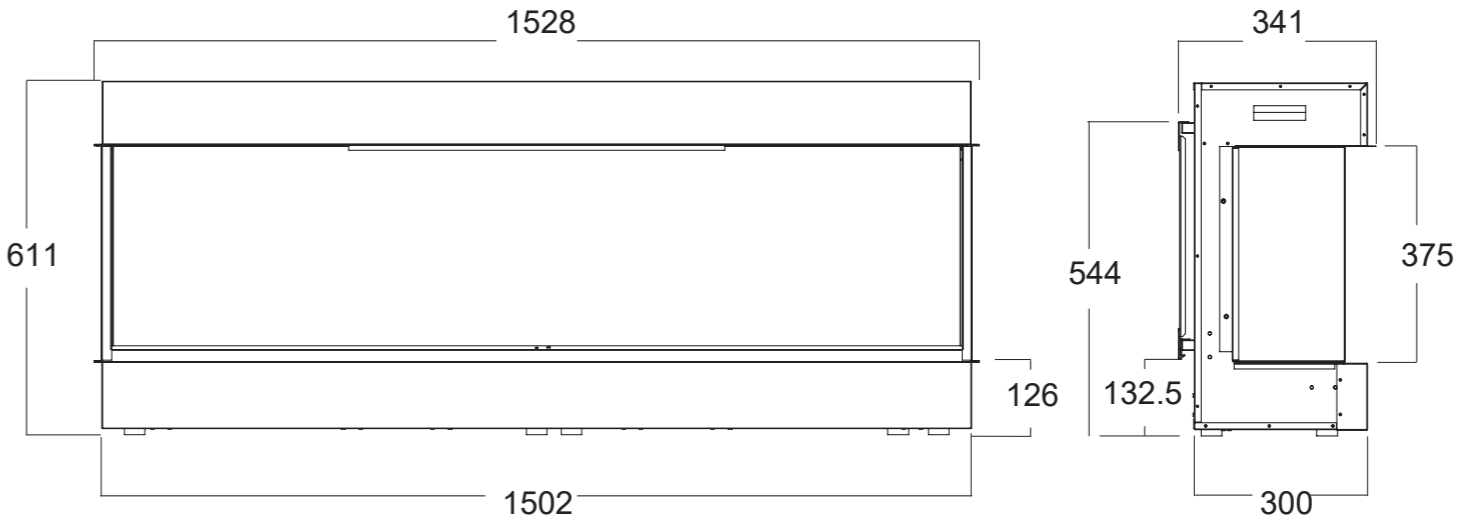
SMART DEVICE
SMART LIFE APP READY

AURORA 1500

Introducing our new Aurora Electric Fire Collection. Using 3D Flame Projection Technology the Aurora Collection provide the look and feel of a real fire and with it's fully customizable flame set and fire bed you can create a fire to suit you.

- | 2kW heat output
- | 3 sided Glass viewing area
- | 3D flame projection technology
- | Crystal embers & realistic logs
- | 4 flame brightness settings & adaptive controls
- | Includes remote control and wall fixings

Type:	Electric
Style:	Installation
Heat Output:	2 kW
Fuel Types:	Crytal embers
	Realistic logs
Control Options:	Manual Remote,
Smart Ready:	Smart Life App
width :	1,528mm
height :	611mm
depth :	341mm
weight :	61kg





SMART DEVICE
**FULL CONTROL
FROM YOUR PHONE**
SIMPLY DOWNLOAD
SMART LIFE APP

AURORA

AURORA 1800

Introducing our new Aurora Electric Fire Collection. Using 3D Flame Projection Technology the Aurora Collection provide the look and feel of a real fire and with it's fully customizable flame set and fire bed you can create a fire to suit you.

- | 2kW heat output
- | 3 sided Glass viewing area
- | 3D flame projection technology
- | Crystal embers & realistic logs
- | 4 flame brightness settings & adaptive controls
- | Includes remote control and wall fixings



SMART DEVICE
SIMPLY DOWNLOAD
SMART LIFE APP

Type:	Electric
Style:	Installation
Heat Output:	2 kW
Fuel Types:	Crytal embers
	Realistic logs
Control Options:	Manual Remote,
Smart Ready:	Smart Life App
width :	1842mm
height :	611mm
depth :	341mm
weight :	45kg



SMART DEVICE
SMART LIFE APP READY

ELECTRIC

HEARTHES

Henley Stoves classic hearth designs are a must have accessory for your new stove, available in a variety of shapes and sizes to best suit your home.



HR103

Granite Filler (back of Hearth) Honed

Available Sizes:

HR100

48"x15" (with 50mm Risers) Honed

HR101

54"x15" (with 50mm Risers) Honed

HR102

60"x15" (with 50mm Risers) Honed

STRAIGHT CUT HEARTHES	
CODE	NAME
HR100	48"x 15" (with 50mm Risers) (Honed)
HR101	54"x15" (with 50mm Risers) Honed
HR102	60"x 15" (with 50mm Risers) (Honed)
HR103	Slip for Back of Hearth 900 x 385 x 20mm (Honed)
IN102	Strips (3 Piece Set) (Honed)

HR109

Granite Curved Heart Champer
1000mm x 900 x 30 mm (Honed)

HR052

Teardrop (Honed) 800 x 800 x 30mm

HR053

Teardrop (Honed) 900 x 900 x 30mm

TEARDROP & CURVED HEARTHES	
Honed Granite	
CODE	NAME
HR109	Curved Heart Champer 1000mm x 900 x 30 mm
HR052	Teardrop - 800 x 800 x 30mm
HR053	Teardrop - 900 x 900 x 30mm
Black Polished Granite	
CODE	NAME
HR035	Teardrop - 900 x 900 x 30 mm

WOOD EFFECT BEAMS

Finished with a water-based stain. Currently available in 2 charming shades of oak, these designs are perfect for any interior project.



LIGNACAST TIMBER EFFECT BEAMS	
CODE	NAME
BE15	Light Oak 1220mm (150mm x 150mm)
BE16	Light Oak 1375mm (150mm x 150mm)
BE17	Oak 1220mm (150mm x 150mm)
BE18	Oak 1375mm (150mm x 150mm)



www.henleystoves.co.uk

email. sales@henleystoves.com

/ Ely Rd Stretham, Ely CB6 3JJ

/ Headquarters: Curraheen, Tralee, Co. Kerry, Ireland

